



የኢትዮጵያ የሕብረተሰብ ጤና ኢንስቲትዩት Ethiopian Public Health Institute

አዲስ አበባ-ኢትዮጵያ Addis Ababa, Ethiopia

ስልክ-Tel: +251 11 2133499, +251 11 2751522, ፋክስ Fax: +251 11 2758634,

የመ.ሳ.ቁ - P. O. BOX: 1242/5654 e-mail: ephi@ethionet.et

www.ephi.gov.et

ቁጥር

Ref. No

ቀን ኢ.ሕ.ጤ.ኢ. 6.15/980

Date

09 ግብጥ 2012

ለአማራ ብሄራዊ ክልላዊ መንግስት ጤና ቢሮ
 ለኦሮሚያ ብሄራዊ ክልላዊ መንግስት ጤና ቢሮ
 ለትግራይ ብሄራዊ ክልላዊ መንግስት ጤና ቢሮ
 ለደቡብ ብሄር ብሄረሰቦችና ህዝቦች ብሄራዊ ክልላዊ መንግስት ጤና ቢሮ
 ለቤንሻንጉል ጉሙዝ ብሄራዊ ክልላዊ መንግስት ጤና ቢሮ
 ለአፋር ብሔራዊ ክልላዊ መንግስት ጤና ቢሮ
 ለጋምቤላ ብሔራዊ ክልላዊ መንግስት ጤና ቢሮ
 ለሐረሪ ክልል ጤና ቢሮ
 ለኢትዮጵያ ሶማሌ ክልላዊ መንግስት ጤና ቢሮ
 ለድሬዳዋ ከተማ አስተዳደር ጤና ቢሮ
 ለአዲስ አበባ ከተማ አስተዳደር ጤና ቢሮ
ባሉበት

ጉዳዩ :- የ ኮቪድ -19 Suspected Case Definition ማሻሻል ይመለከታል

የኢትዮጵያ ሕብረተሰብ ጤና ኢንስቲትዩት ከሌሎች አጋር ድርጅቶች ጋር በመሆን የኮሮና ቫይረስ ወረርሽኝ በሀገራችን ከተከሰተ ጀምሮ ዘርፈ. ብዙ ስራዎች ሲከናወኑ ቆይቷል። ከነዚህም ስራዎች መካከል በቫይረሱ ሊያዙ ይችላሉ የሚባሉ ሰዎችን ለመለየት የምንጠቀምበትን የመለያ መንገድ (Case Definition) አዘጋጅቶ ተግባራዊ ማድረግ ነው።

በአሁኑ ወቅት በሀገራችን የሚስተዋሉ የተለያዩ መነሻዎችን ምክንያት በማድረግ የምንጠቀምበት የ Case Definition ማሻሻያ ማድረግ አስፈላጊ ሆኖ ተገኝቷል። በዚህም መሰረት ለኮቪድ -19 የምንጠቀምበት የ Suspected Case Definition የተቀየረ መሆኑን እያሳሰብን ለትግበራው ይረዳ ዘንድ የተዘጋጀውን መመሪያ ከዚህ ሸኚ ደብዳቤ ጋር 2 ገጽ አባሪ አድርገን የላክን መሆኑን እንገልጻለን።

ግልባጭ

- ለሞና ዳይሬክተር ጽ/ቤት
ኢ.ሕ.ጤ.ኢ.



ለጤናችን በጋራ እንስራ!

Handwritten signature
አስቸኳይ አባይነህ ም/ሞና ዳይሬክተር

Suspected Case Definition for COVID-19

A. A patient with acute respiratory illness (Fever or history of fever AND at least one sign/symptom of respiratory disease, e.g., cough, shortness of breath), regardless of a history of travel to or residence in a location reporting community transmission of COVID -19 disease

OR

B. A patient with acute respiratory illness (Fever or history of fever AND at least one sign/symptom of respiratory disease, e.g., cough, shortness of breath), regardless of having contact history with a confirmed or probable COVID-19 case

OR

C. A patient with severe acute respiratory illness (fever and at least one sign/symptom of respiratory disease, e.g., cough, shortness of breath, AND requiring hospitalization) AND in the absence of an alternative diagnosis that fully explains the clinical presentation.

NB: - "Those individuals who claim to have contact with confirmed or probable COVID-19 cases will be communicated to contact tracing teams under all respective health system structures urgently."



What to do when Suspected COVID-19 Cases is Identified

Suspected COVID-19 Cases detected by using this case definition from toll free (hotline), community visit, health facility, or any other means will be subjected to investigation by the respective RRT team under all respective health system. The procedures to be followed for the management of suspected cases is indicated in the following flow chart

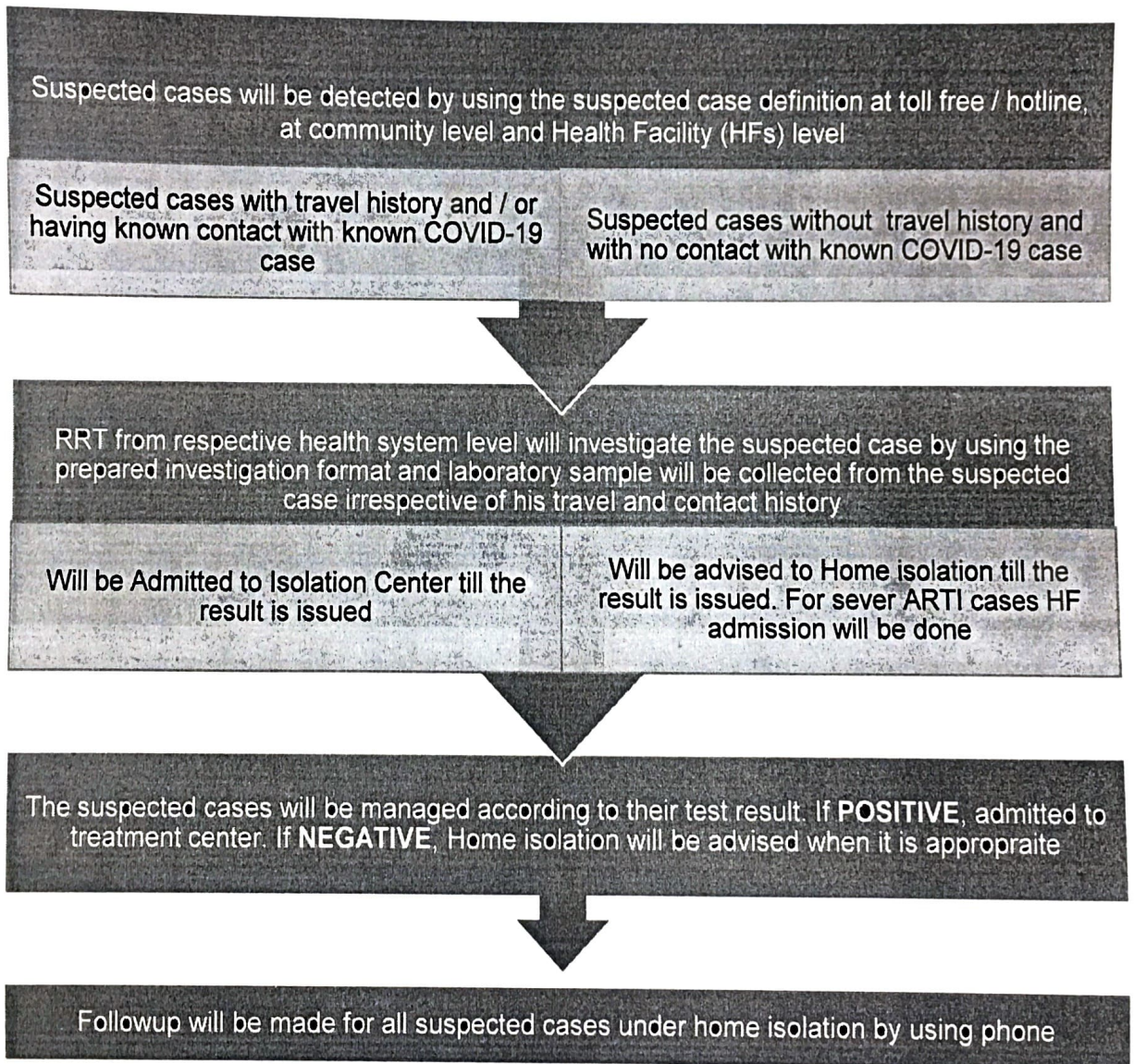


Figure: - Protocol for managing suspected cases by using the suspected case definition

