



Address: Telephone: +251-112-765-340, Toll free: 8335, Fax: +251-112-758-634, Website: www.ephi.gov.et, P.O. Box 1242, Swaziland Street, Addis Ababa

## NATIONAL PUBLIC HEALTH EMERGENCY OPERATION CENTER (PHEOC), ETHIOPIA

### COVID-19 PANDEMIC PREPAREDNESS AND RESPONSE IN ETHIOPIA

## WEEKLY BULLETIN

Epi-Week- 11 (March 14 – 20, 2022)

BULLETIN No: 99

## I. Highlights

- A total of 34,675 laboratory samples were tested in the Epi-Week-11 bringing the total number of samples tested to 4,601,985.
- A total of 271 new confirmed COVID-19 cases and 3 COVID-19 related deaths were reported during the Epi-Week-11 bringing the total cases and death to 469,455 and 7,489 respectively.
- In this week the maximum number of daily cases in severe condition is 53 which is lower than the maximum number of daily cases in severe condition in the previous week (66).
- A total of 352,362 COVID-19 confirmed cases have been managed at Home Based Isolation and Care so far; 84 of these were enrolled in the Epi-Week-11.
- In Ethiopia, a total of 29,215,769 doses of COVID-19 vaccine (either AstraZeneca, Sinopharm, Johnson and Johnson or Pfizer) are administered so far. Out of these, 510,761 doses are administered in this week. Among the vaccinated individuals 20,939,612 (72%) people are fully vaccinated.

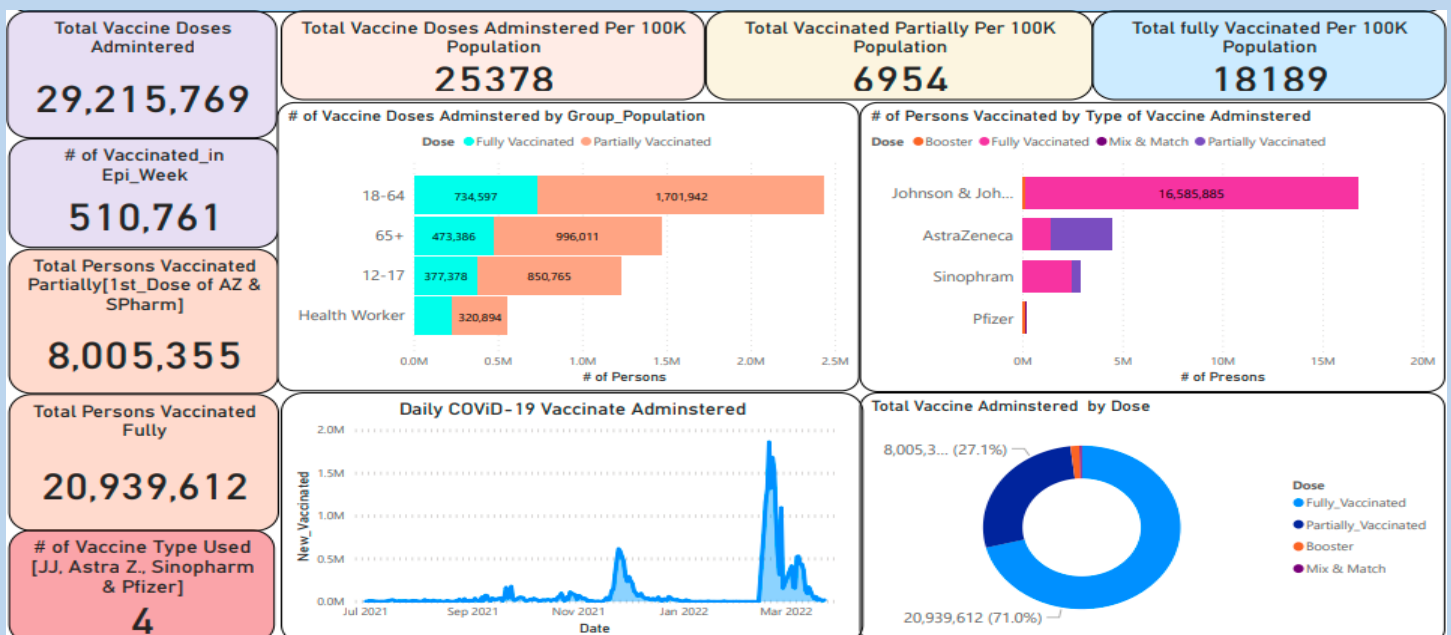


Figure 1: Summary of vaccination against COVID-19 in Ethiopia as of March 20, 2022

## II. Epidemiological Situation

### a. Global Situation

- Globally, during the week of 14 to 20 February 2022, the number of new COVID-19 cases and deaths decreased by 21% and 8% respectively, compared to the previous week.
- Across the six WHO regions, over 12 million new cases and over 67 000 new deaths were reported. As of 20 February 2022, over 422 million confirmed cases and over 5.8 million deaths have been reported globally.
- At the regional level, the Western Pacific Region reported a 29% increase in the number of new weekly cases while all other regions reported decreases.
- The number of new weekly deaths increased in the Western Pacific (+21%) and the African (+20%) regions, and decreased in the South-East Asia (-37%), the Regions of the Americas (-9%), the European (-5%) and Eastern Mediterranean regions (-4%).

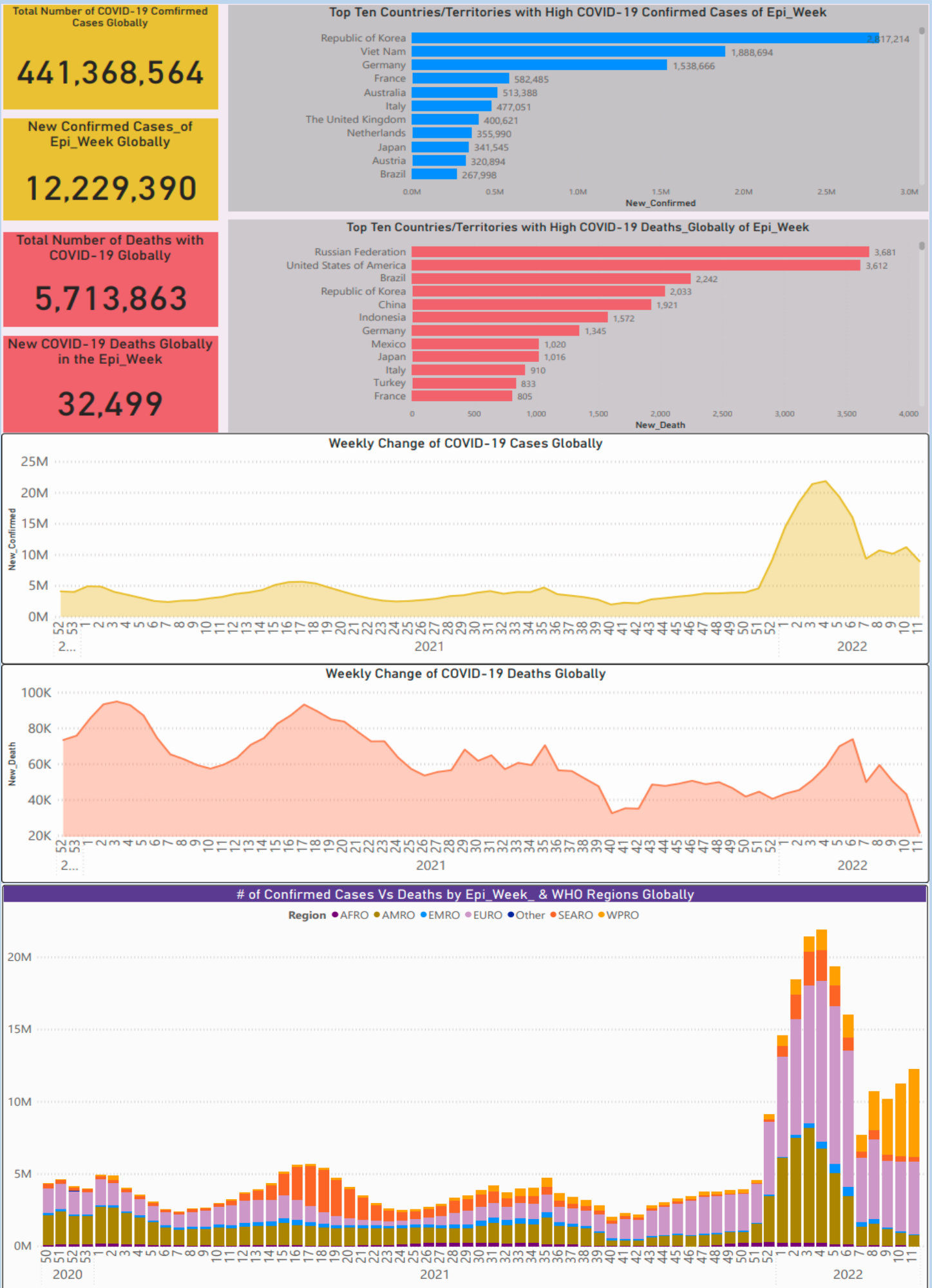
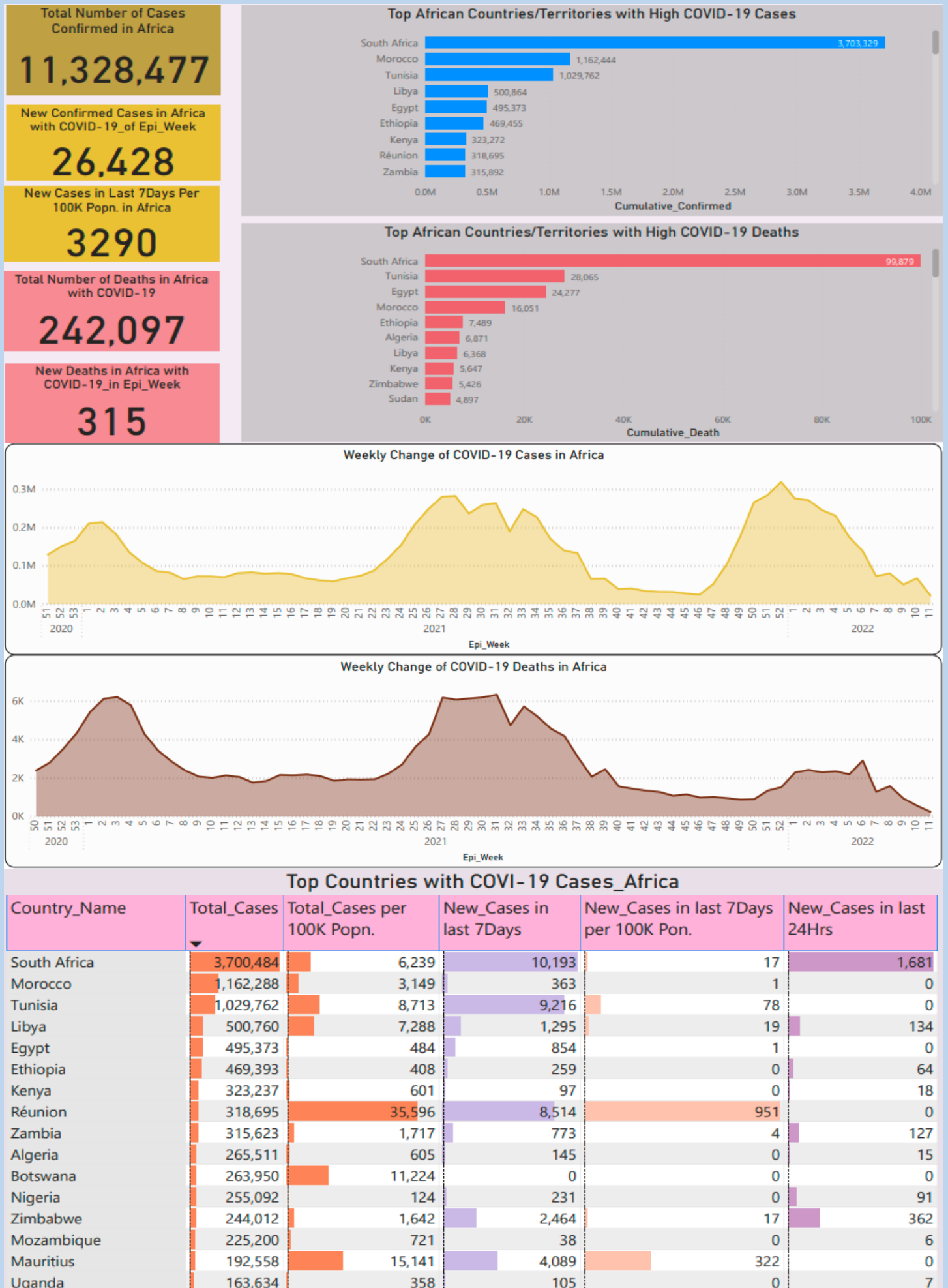


Figure 2: COVID-19 Global Situation Update as of March 20, 2022 (Source: WHO)



**Figure 3: COVID-19 Situation Update in Africa as of March 20, 2022 (Source: WHO)**

## b. National COVID-19 situation:

- As of March 20, 2022, a total of 469,455 confirmed COVID-19 cases and 7,489 deaths were recorded in the country with a case fatality rate of 1.60%.
- Two-hundred-eighteen (271) newly confirmed COVID-19 cases and 3 COVID-19 related deaths were reported during the Epi-Week-11.
- In this week, there is 24% increase in the number of COVID-19 confirmed cases and 70% decrease in the number of deaths due to COVID-19 compared to the previous week.
- For detail, see the summary dashboard below.

*NB: Data from Tigray regional state is as of June 28, 2021.*

**Table 1: Summary of National COVID-19 situation in the Epi-Week-11 of 2022**

Regions	New_Testeds	New_Case	New_HF_Admission	New_Deaths	Positivity Rate
Addis Ababa	23,148	221	26	2	0.7
Oromia	3,687	22	14	1	0.7
SNNPR	3,440	17	2	0	0.3
Dire Dawa	889	7	0	0	0.6
Afar	868	1	0	0	0.1
Somali	691	3	0	0	0.6
Sidama	495	0	0	0	0.0
Harari	431	0	0	0	0.0
Amhara	420	0	0	0	0.0
Benishangul G	221	0	0	0	0.0
SWEP	186	0	0	0	0.0
Gambella	139	0	0	0	0.0
Tigray	0	0	0	0	
<b>Total</b>	<b>34,615</b>	<b>271</b>	<b>42</b>	<b>3</b>	<b>0.3</b>

\*\*\*\* Positivity Rate is the Averages of Regional Distributions

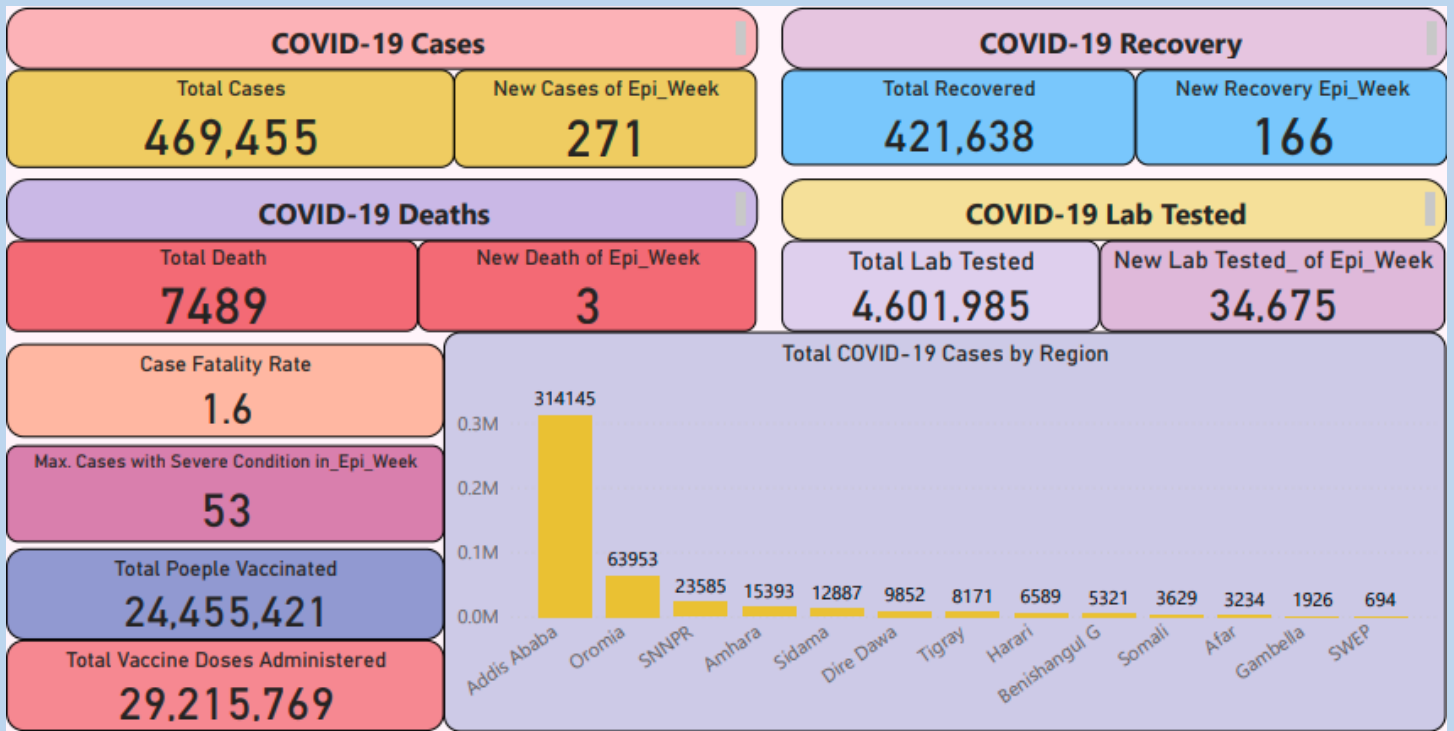


Figure 4: Summary of the COVID-19 situation in Ethiopia as of March 20, 2022, Ethiopia

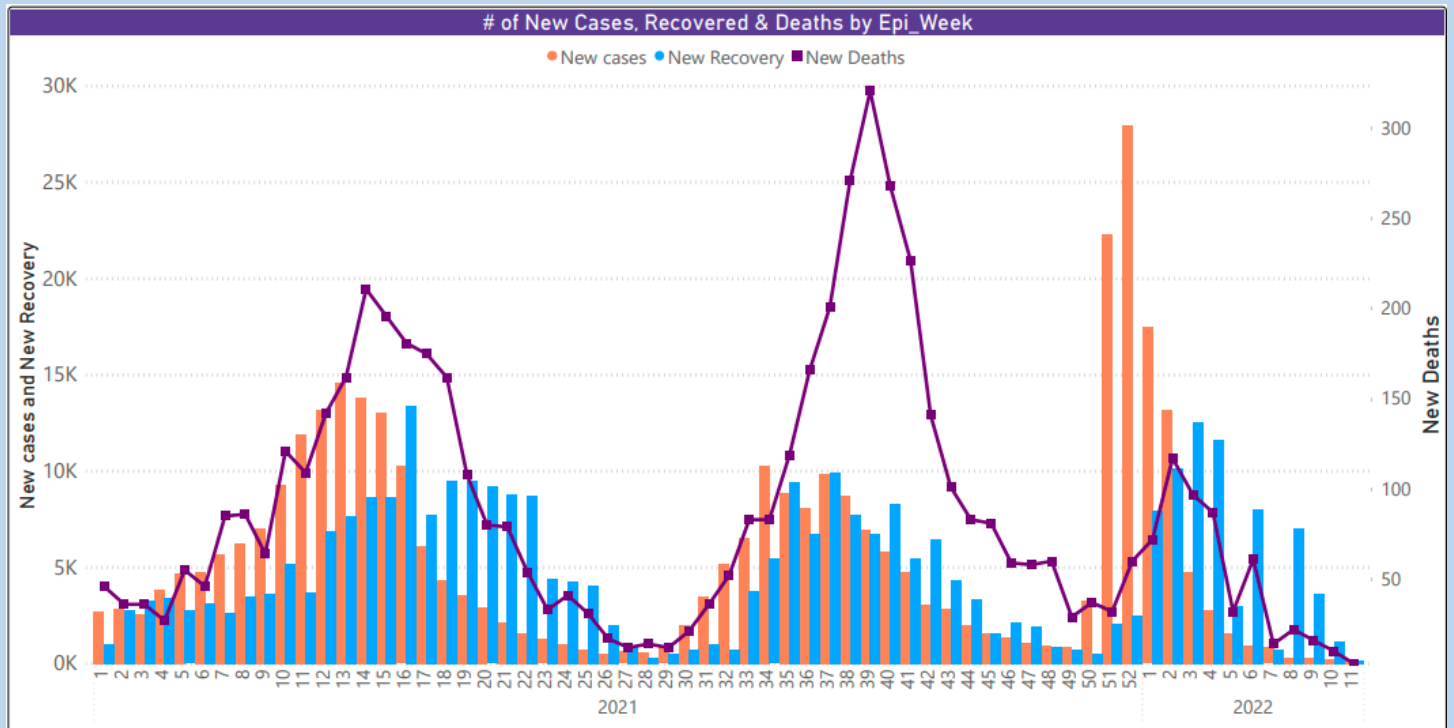


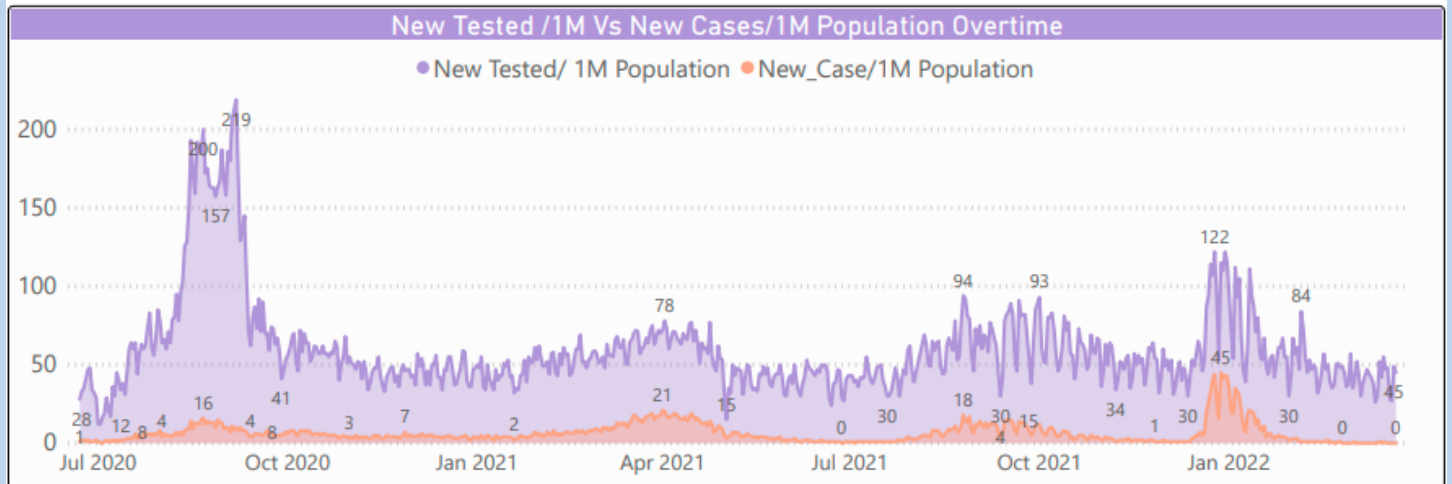
Figure 5: COVID-19 confirmed cases, recovery and death by Epi-Week as of March 20, 2022, Ethiopia

### c. Other Epi-Surveillance Related Activities

There is ongoing travelers' health screening at point of entries (POEs), investigation and information provision via toll free call center and follow-up of persons who had contact with confirmed cases. There is also laboratory investigation of suspected cases, contacts of confirmed cases, SARI/pneumonia cases and community members, surveillance and assessment in school and congregated setting communities.



Total Tested /1 M Population <b>39975</b>	Total Tests Last 7 Days <b>34675</b>	Total Cases /1 M Population <b>4078</b>	Cummulative Positivity Rate <b>10.2</b>	Total Recovered Last 7 Days <b>166</b>	Total Deaths /1 M Population <b>65</b>
Tested /1 M Population_Epi_Week <b>302</b>	# of Tests done to get One (1) Case_in the Epi_Week <b>232</b>	Total Cases Confirmed Last 7 Days <b>271</b>	Positivity Rate_Epi_Week <b>0.8</b>	% of Increase or Decrease of Cases_Epi_Week <b>24.3</b>	Total Deaths Last 7 Days <b>3</b>



**Figure 6: Summary of COVID-19 situation in Ethiopia as of March 20, 2022.**

### III. Laboratory related activities

- As of 20 March 2022, a total of 4,601,985 samples have been tested for COVID-19 by laboratories across the country.
- 34,675 laboratory tests were processed during the Epi-Week-11 which is a 9% increase compared to number of tests performed in the previous week.
- The laboratory test positivity rate for the Epi-Week-11 is 0.78%, which is almost equivalent to that of the preceding week (0.68%).
- Somali, Gambella, Benishangul Gumuz and Oromia regional states and Addis Ababa city administration have reported positivity rates higher than the national weighted average (figure 8 below). There is no report from Tigray regional state since June 29, 2021.
- Among the total COVID-19 laboratory tests performed in Ethiopia, a total of 1,675,439 laboratory tests are performed by Ag-RDT among which 18,170 is performed in the Epi-week-11 (figure 7 below).

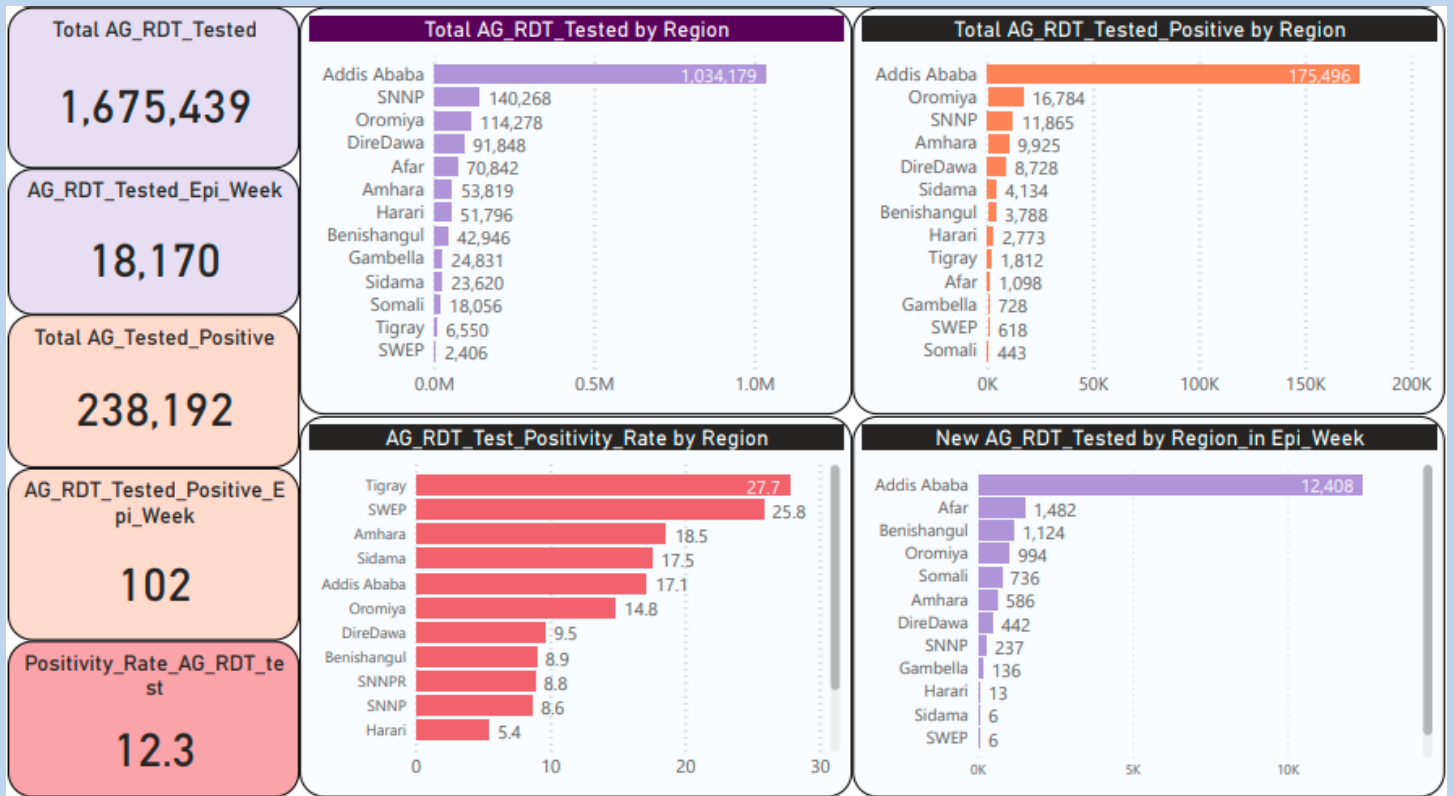
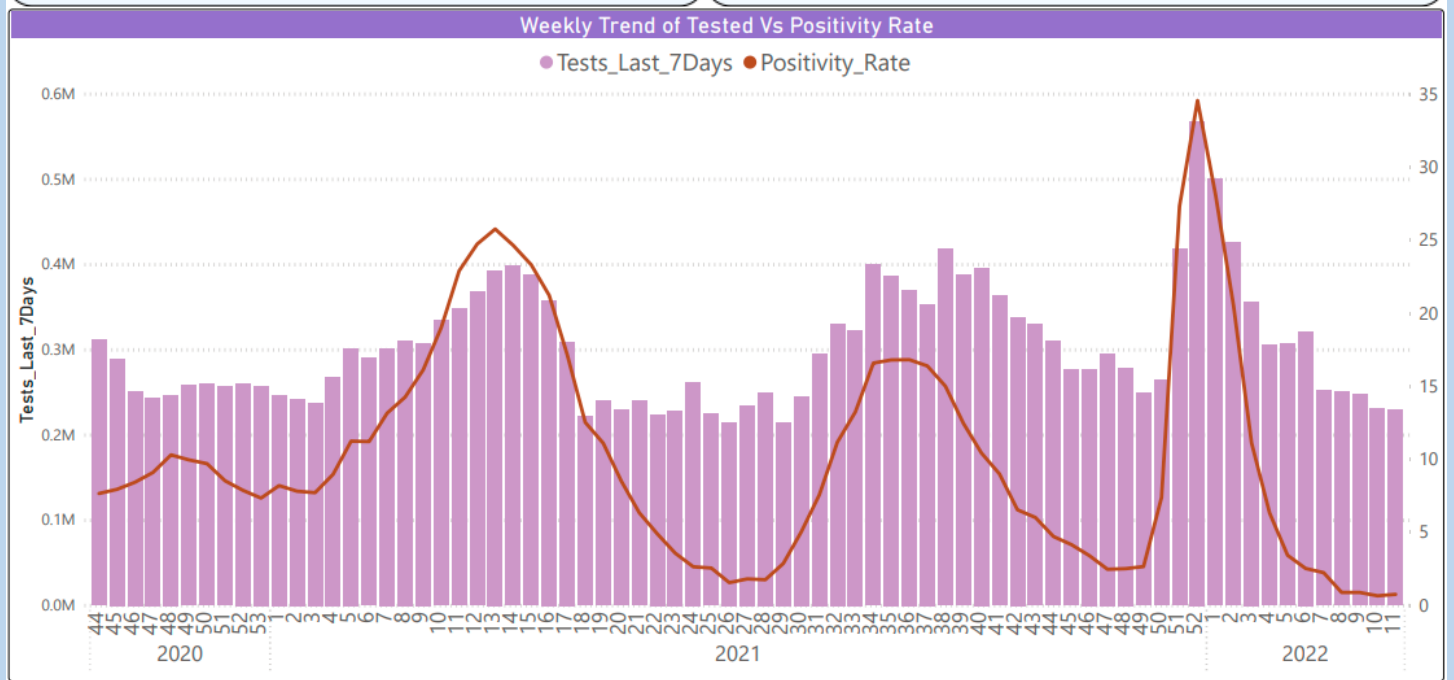
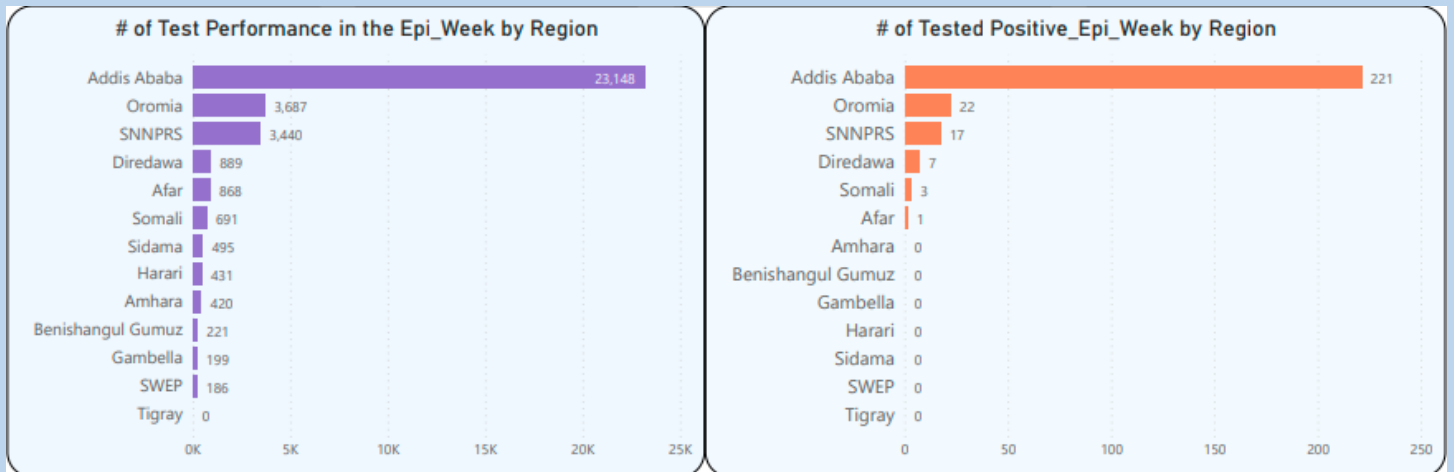


Figure 7: Update on laboratory tests performed by Ag-RDT, as of March 20, 2022





Region/City Admn	New Tested	New Case	New Death	Positivity Rate
Addis Ababa	23,148	221	2	0.96
Afar	868	1	0	0.11
Amhara	420	0	0	0.00
Benishangul Gumuz	221	0	0	0.00
Diredawa	889	7	0	0.57
Gambella	199	0	0	0.00
Harari	431	0	0	0.00
Oromia	3,687	22	1	0.74
Sidama	495	0	0	0.00
SNNPRS	3,440	17	0	0.40
Somali	691	3	0	0.41
SWEP	186	0	0	0.00
Tigray	0	0	0	0.00
<b>Total</b>	<b>34,675</b>	<b>271</b>	<b>3</b>	<b>0.31</b>

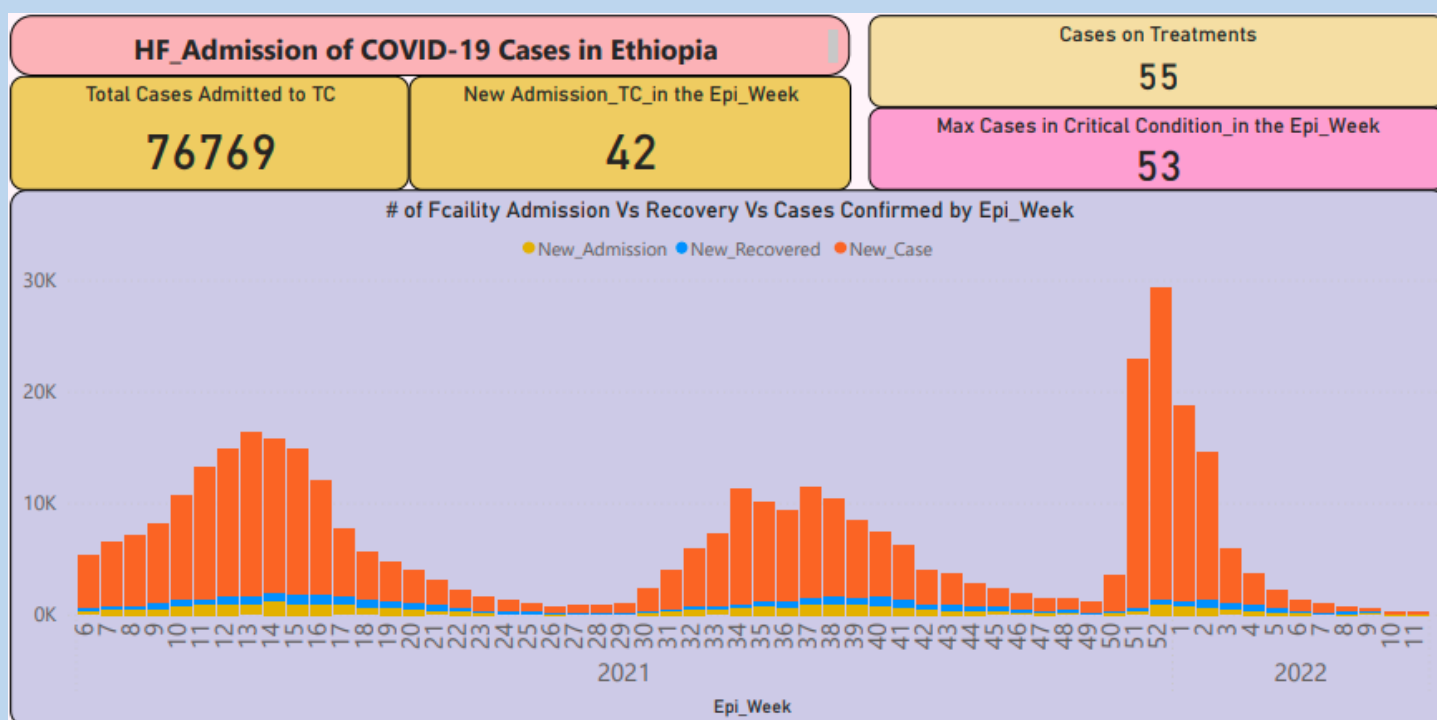
\*\*\*\*\* Positivity Rate is average of Regional Distrn of Rates

Figure 8: Summary of COVID-19 laboratory testing as of March 20, 2022, Ethiopia.

## IV. Case Management and Facility Readiness

### a. COVID-19 treatment center

- There were total of 166 newly recovered COVID-19 cases during the Epi-Week-11, bringing the total number of recovered cases to 421,638 (both from COVID-19 treatment center and from HBIC). This brings the overall recovery rate to 90%.
- In this week the maximum number of daily cases in severe condition is 53 which is lower than the maximum number of daily cases in severe condition in the previous week (66).



HF=Health Facilities TC=Treatment Center

Figure 9: Summary of COVID-19 cases in Health Facilities/Treatment centers, as of March 20, 2022.

Table 2: Summary of COVID-19 cases at treatment centers as of March 20, 2022

Regions	Total_Case	New_Case	Total_Admission	New_Admission	Total_Death	Total_Recovered	On_Treatment	Severe Case
Addis Ababa	314145	10	38593	0	4077	32768	10	10
Oromia	63953	3	11556	0	1135	10398	17	13
SNNPR	23585	1	5014	0	289	4723	2	1
Amhara	15393	0	5742	0	487	5230	21	12
Sidama	12887	0	3741	0	231	3445	0	0
Dire Dawa	9852	0	1540	0	144	1395	1	0
Tigray	8171	0	5290	0	59	5224	0	0
Harari	6589	0	1476	0	197	1275	0	0
Benishangul G	5321	0	1043	0	33	1008	4	0
Somali	3629	0	782	0	115	664	0	0
Afar	3234	0	826	0	5	812	0	0
Gambella	1926	0	682	0	8	674	0	0
SWEP	694	0	484	0	15	469	0	0

## b. Home Based Isolation and Care (HBIC):

- So far, 352,557 COVID-19 confirmed cases have been on HBIC. Of them 352,362 (99%) have recovered and 50 (0.014%) died.
- Of these, 84 cases have been enrolled to HBIC and 86 cases have recovered in the Epi-Week-11.
- As of March 20, 2022, there are 853 cases on HBIC.
- So far, 2,525 (99 in the Epi-week-11) of the cases have been transferred from treatment centers to HBIC after improvement.
- So far, 1,321 (none in the Epi-week-11) of the cases have been transferred from HBIC to treatment centers for better care.

## V. Risk Communication and Community Engagement (RCCE)

- Media (mass media and social media) monitoring on COVID-19 related information is ongoing.
- Risk communication and awareness creation activities are ongoing.
- COVID-19 related key messages and updates shared on social media.

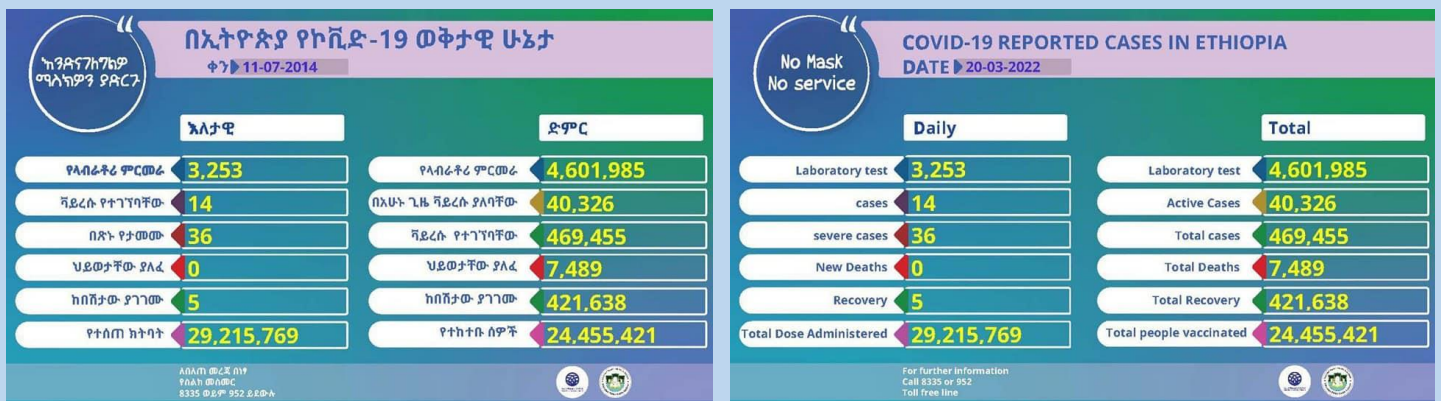


Figure 10: COVID-19 situation update as of March 20, 2022 shared on social media.

## VI. Coordination and Leadership

- The national PHEOC is collaboratively working with stakeholders: government agencies, partner organizations, UN agencies, embassies, hospitals, Industrial parks and others.
- Morning briefing of IMS is being conducted every day by core IMS staffs and key partners' representatives.
- Weekly joint meeting is ongoing, every Tuesday, among the national and regional Emergency Operations Centers COVID-19 response IMS (Incident Management System) to evaluate weekly COVID-19 situations, progress of response strategies, challenges faced and way forwards.
- The virtual meeting of Joint Steering Committee encompassing MOH, Agencies and RHB top leadership under the leadership of H.E Minister of Health is ongoing once in two weeks.

## VII. Challenges and Way Forward

### a. Challenges

- Poor adherence to the public health and social measures by public figures and leaders.
- Poor attention given to COVID-19 at all levels by all responsible bodies.
- Weak law enforcement efforts to enhance adherence to COVID-19 prevention and control measures.
- COVID-19 vaccine related misinformation and hesitancy.

### b. Way Forward

- Enhancing COVID-19 vaccination
- Enhancing law enforcement to enhance public health and social measures by all responsible bodies.
- Intensifying risk communication and community engagement activities.
- Strengthening collaboration and coordination with key stakeholders and partners.
- Enhancing technical support, coordination and timely and accurate information sharing at all levels.
- Generating scientific evidence and forecast regarding COVID-19 progress.

## VIII. Public Health Policy Recommendation

### Advice for the Public:

- COVID-19 vaccines should be provided to the public only at public health facilities and free of charge. According to the program developed by the Ministry of Health, COVID-19 vaccines are still being given to priority groups at public health institutions at all levels.
- For any individual confirmed to have COVID-19 and who is candidate for Home Based Isolation and Care:
  - Properly isolate from other family members.
  - Take full responsibility in prevention of transmission
  - Strictly adhere to the National Directive of Home-Based Isolation & Care.
  - Provide reliable information during regular follow up either by phone or home visit.
  - Report to nearest health facilities/follow up team in case of any emergency, appearance of new symptoms or worsening of existing symptoms.
- It is important to be informed of the situation and act appropriately to protect yourself and your family.
  - Wash hands frequently;
  - Don't touch your mouth, nose or eye by unwashed hands;
  - Keep physical distancing; avoid mass gathering and shaking hands;
  - Get vaccinated against COVID-19.

- For most people, COVID-19 infection will cause mild illness however, it can make some people very ill and, in some people, it can be fatal.
- Older people, and those with pre-existing medical conditions (such as cardiovascular disease, chronic respiratory disease or diabetes) are at risk for severe disease.
- If anybody had contact with a COVID-19 confirmed patient, he/she should call 8335 or report to regional toll-free lines or to the nearby health facilities.

## National/Regional official websites, social media pages and toll-free hotline for COVID-19 information

MOH/EPHI/Region	Facebook page	Toll-free hotline	Email address (PHEOCs email)
Ethiopian Public Health Institute Main Website	<a href="https://www.ephi.gov.et/">https://www.ephi.gov.et/</a>	8335	<a href="mailto:ephieoc@gmail.com">ephieoc@gmail.com</a>
Ethiopian Public Health Institute COVID-19 Website	<a href="https://covid19.ephi.gov.et/">https://covid19.ephi.gov.et/</a>		
Ethiopian Public Health Institute Facebook Page	<a href="https://www.facebook.com/ephipa ge/">https://www.facebook.com/ephipa ge/</a>		
Ethiopian Public Health Institute Twitter Page	<a href="https://twitter.com/EPHIethiopia">https://twitter.com/EPHIethiopia</a>		
Ethiopian Public Health Institute Telegram Channel	<a href="https://t.me/EthPHI">https://t.me/EthPHI</a>		
Ethiopian Public Health Institute YouTube Channel	<a href="https://www.youtube.com/channel/UCvvTzeY-IJiQfEFBULH9Mkw">https://www.youtube.com/channel/UCvvTzeY-IJiQfEFBULH9Mkw</a>		
Ministry of Health, Ethiopia Website	<a href="http://www.moh.gov.et">www.moh.gov.et</a>	952	
Ministry of Health, Ethiopia Facebook Page	<a href="https://www.facebook.com/EthiopiaFMoH/">https://www.facebook.com/EthiopiaFMoH/</a>		
Afar Regional Health Bureau	<a href="https://www.facebook.com/afarrhb.org/">https://www.facebook.com/afarrhb.org/</a>	6220	<a href="mailto:afarpheoc@gmail.com">afarpheoc@gmail.com</a>
Amhara Regional Health Bureau	<a href="https://www.facebook.com/Amhara-Healthbureau-682065755146948/">https://www.facebook.com/Amhara-Healthbureau-682065755146948/</a>	6981	<a href="mailto:aphieoc@gmail.com">aphieoc@gmail.com</a>
Benishangul Gumuz Regional Health Bureau	<a href="https://www.facebook.com/Benishangul-Gumuz-Health-Bureau-1676282159265517/">https://www.facebook.com/Benishangul-Gumuz-Health-Bureau-1676282159265517/</a>	6016	<a href="mailto:bgpheoc@gmail.com">bgpheoc@gmail.com</a>
Gambela Regional Health Bureau	<a href="https://fb.me/gambellaregionhealthbureau">https://fb.me/gambellaregionhealthbureau</a>	6184	<a href="mailto:gambellapheoc@gmail.com">gambellapheoc@gmail.com</a>
Harari Regional Health Bureau	<a href="https://www.facebook.com/Harari-Regional-Health-Bureau-1464182130355007/">https://www.facebook.com/Harari-Regional-Health-Bureau-1464182130355007/</a>	6864	<a href="mailto:hrhbpheoc@gmail.com">hrhbpheoc@gmail.com</a>
Oromia Regional Health Bureau	<a href="https://www.facebook.com/OromiaHealth/">https://www.facebook.com/OromiaHealth/</a>	6955	<a href="mailto:oromiapheoc@gmail.com">oromiapheoc@gmail.com</a>
Somali Regional Health Bureau	<a href="https://www.facebook.com/srhbdotcom/">https://www.facebook.com/srhbdotcom/...</a>	6599	<a href="mailto:somalipheoc@gmail.com">somalipheoc@gmail.com</a>
SNNP Regional Health Bureau	<a href="https://www.facebook.com/snnprhealthbureau/?ref=br_rs">https://www.facebook.com/snnprhealthbureau/?ref=br_rs</a>	6929	<a href="mailto:snnppheoc@gmail.com">snnppheoc@gmail.com</a>
Tigray Regional Health Bureau	<a href="https://www.facebook.com/tigrayrhb/">https://www.facebook.com/tigrayrhb/</a>	6244	<a href="mailto:tigraypheoc@gmail.com">tigraypheoc@gmail.com</a>
Sidama PHEM		7794	<a href="mailto:sidaamapheoc@gmail.com">sidaamapheoc@gmail.com</a>
South West Ethiopia RHB PHEM			<a href="mailto:swepheoc@gmail.com">swepheoc@gmail.com</a>
Dire Dawa city Administration Health Bureau	<a href="https://www.facebook.com/Dire-Dawa-Administration-Health-Bureau-1371606266279524/">https://www.facebook.com/Dire-Dawa-Administration-Health-Bureau-1371606266279524/</a>	6407	<a href="mailto:ddpheoc@gmail.com">ddpheoc@gmail.com</a>

Addis Ababa City Administration Health Bureau	<a href="https://www.facebook.com/aahb.gov.et/">https://www.facebook.com/aahb.gov.et/</a>	6406	aapheoc@gmail.com
---	---	------	-------------------

### COVID-19 updates and sources of evidence:

Source	Link
WHO Coronavirus (COVID-19) dashboard	<a href="https://covid19.who.int/">https://covid19.who.int/</a>
Africa CDC Dashboard, COVID-19 Surveillance Dashboard	<a href="https://au.int/en/covid19">https://au.int/en/covid19</a>
WHO COVID-19 daily situation reports	<a href="https://www.who.int/emergencies/diseases/novel-coronavirus-2019/situation-reports">https://www.who.int/emergencies/diseases/novel-coronavirus-2019/situation-reports</a>
WHO Academy mobile learning app for health workers, COVID-19 information	Android- <a href="https://play.google.com/store/apps/details?id=org.who.WHOA">https://play.google.com/store/apps/details?id=org.who.WHOA</a> Apple- <a href="https://apps.apple.com/us/app/who-academy/id1506019873">https://apps.apple.com/us/app/who-academy/id1506019873</a>



The above presented Quick Reader (QR) code takes you to a portal that you can access updates and all COVID-19 related information available (<https://covid19.ephi.gov.et/covid-19/>)

**DISCLAIMER**

This weekly bulletin is produced based on figures pulled from official releases of the World Health Organization and activities and reports of all the sections under the Incident management System.

This Weekly Bulletin series of publications is published by the Ethiopian public health Institute (EPHI), public health emergency operation center (PHEOC). The aim of this bulletin is to inform decision makers within the institute and FMOH, UN agencies and NGOs about COVID-19 preparedness and response activities.

All interested health and other professionals can get this bulletin at the Institute website; [www.ephi.gov.et](http://www.ephi.gov.et)

**PREPARED BY**

Fantu Lombamo (MD, MPH in Field Epidemiology) – Planning Section, Situation Unit Leader  
Negusse Yohannes (PhD in Statistics) – Planning Section, Situation Unit Member

**REVIEWED BY**

Zewdu Assefa (MPH) – PHE Early Warning and Information System Management P/D/A/Director  
Ahimed Mohammed (MD, MPH) - Planning Section Chief  
Mikiyas Teferi (MD) - Deputy Incident Manager, Case Management Section Chief  
Aschalew Abayneh (RN, BSc, MPH) - DDG-EPHI, Incident Manager

**National COVID-19 Response Incident Management system, Emergency Operation Center  
FOR MORE INFORMATION and NOTIFICATION**

**Web:** [www.ephi.gov.et](http://www.ephi.gov.et)

**Follow us on Twitter:** @EPHIEthiopia

**Facebook:** <https://www.facebook.com/ephipage/>

**Telegram:** <https://t.me/EthPHI>

**Call:** 8335 (TOLL FREE LINE) or 011 276 5340

**Email:** [ephieoc@gmail.com](mailto:ephieoc@gmail.com) or [phemdatacenter@gmail.com](mailto:phemdatacenter@gmail.com)