



NATIONAL PUBLIC HEALTH EMERGENCY OPERATION CENTER (PHEOC), ETHIOPIA

COVID-19 PANDEMIC PREPAREDNESS AND RESPONSE IN ETHIOPIA

WEEKLY BULLETIN

Epi-Week - 30 (25 – 31 July 2022)

BULLETIN №: 118

I. Highlights

- A total of 18,447 laboratory samples were tested in the week-30, bringing the total number of samples tested to 5,141,931.
- As of 31 July 2022, a total of 492,237 COVID-19 confirmed cases had been detected. Of these, 478 were new cases reported in the Epi-week 30. The new cases have shown decreasing in the last five consecutive weeks.
- Two (2) new deaths were reported in this week, bringing a cumulative COVID-19 death of 7,568.
- In this week the maximum number of daily cases in severe condition is 38 which is lower than the maximum number of daily cases in severe condition in the previous week.
- As of 31 July 2022, a total of 400,286 COVID-19 confirmed cases have been managed at Home Based Isolation and Care, of which about 804 cases were newly enrolled in the Epi-Week-30.
- As of 31 July 2022, a total of 52,557,210 COVID vaccine dose was administered and 43,122,195 people vaccinated at least one dose of vaccine, bringing overall coverage of 64.6% and 40.3% from target and total population respectively.
- The Ministry of Health and the Ethiopian Public Health Institute jointly issued a press conference on the current situation of COVID-19, monkeypox, malaria and measles.

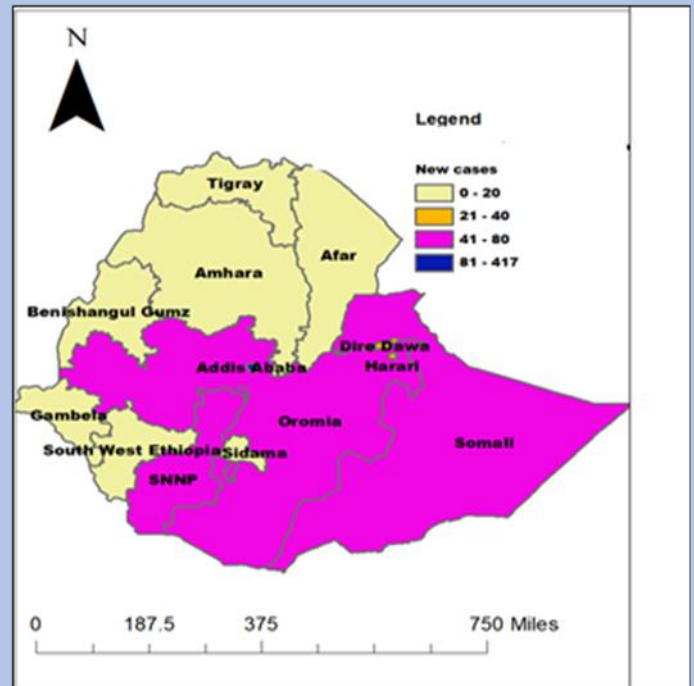


Figure 1: Distribution of new cases in week 30

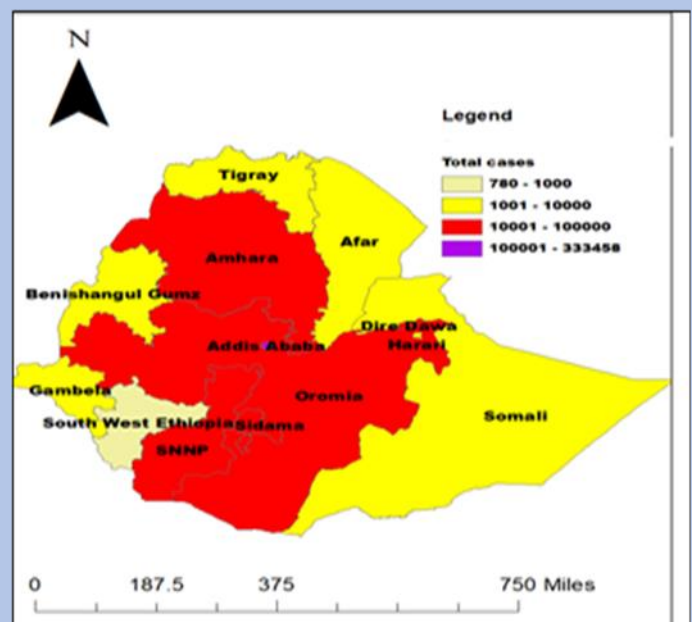
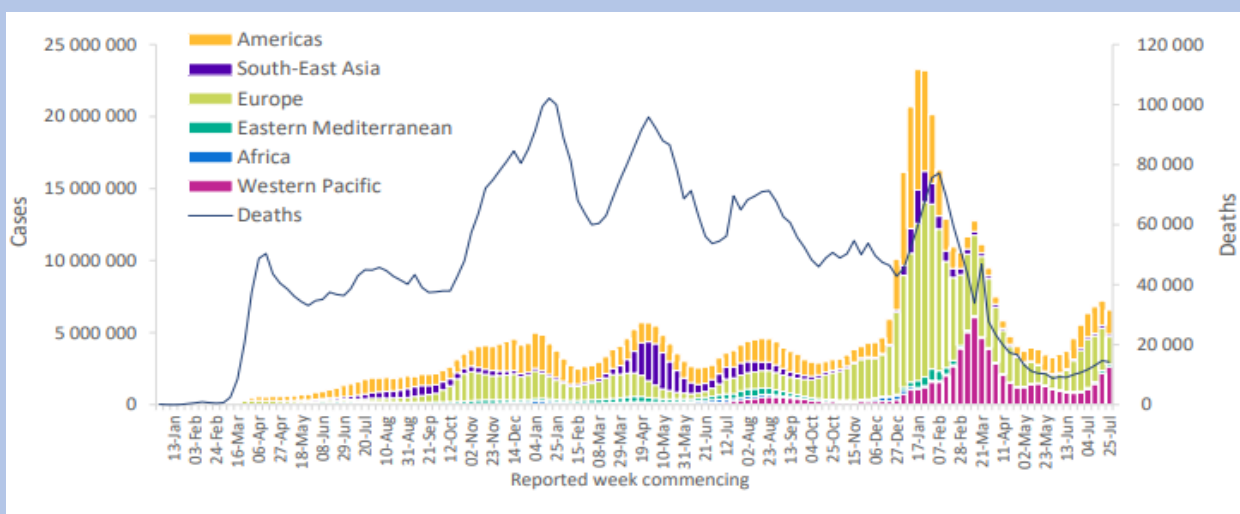


Figure 2: Distribution of cumulative cases as of 31 July 2022.

II. Epidemiological Situation

a. Global Situation

- Globally, the number of weekly cases decreased by 9% during the week of 25 to 31 July 2022 as compared to the previous week, with over 6.5 million new cases reported (Figure 1, Table-1).
- The number of new weekly deaths remained stable this week as compared to the previous week, with over 14 000 fatalities reported.
- As of 31 July 2022, over 574 million confirmed cases and over 6.3 million deaths have been reported globally.
- At the regional level, the number of reported new weekly cases increased in the Western Pacific Region (+20%) and the African Region (+5%); at the same time, it decreased or remained stable in the European Region (-35%), the Eastern Mediterranean Region (-12%), the South-East Asia Region (-2%) and the Region of the Americas (-2%).
- The number of new weekly deaths increased in the Western Pacific Region (+44%), the Eastern Mediterranean Region (+26%), the South-East Asia Region (+20%), and the African Region (+12%), while it decreased in the European Region (-26%).
- The number of new weekly deaths in the Region of the Americas was similar to the figure reported during the previous week.
- Globally, from 1 July to 1 August 2022, 204 668 sequences were collected and uploaded to GISAID. Among these, 203 440 sequences were Omicron variant of concern (VOC) and its descendent lineages, accounting for 99% of sequences reported globally in the past 30 days.
- Current trends in reported COVID-19 cases and deaths should be interpreted with caution as several countries have been progressively changing COVID-19 testing strategies,



resulting in lower overall numbers of tests performed and consequently lower numbers of cases detected.

Figure 3: COVID-19 case reported weekly by WHO Region, and global deaths, as of 31 July 2022.

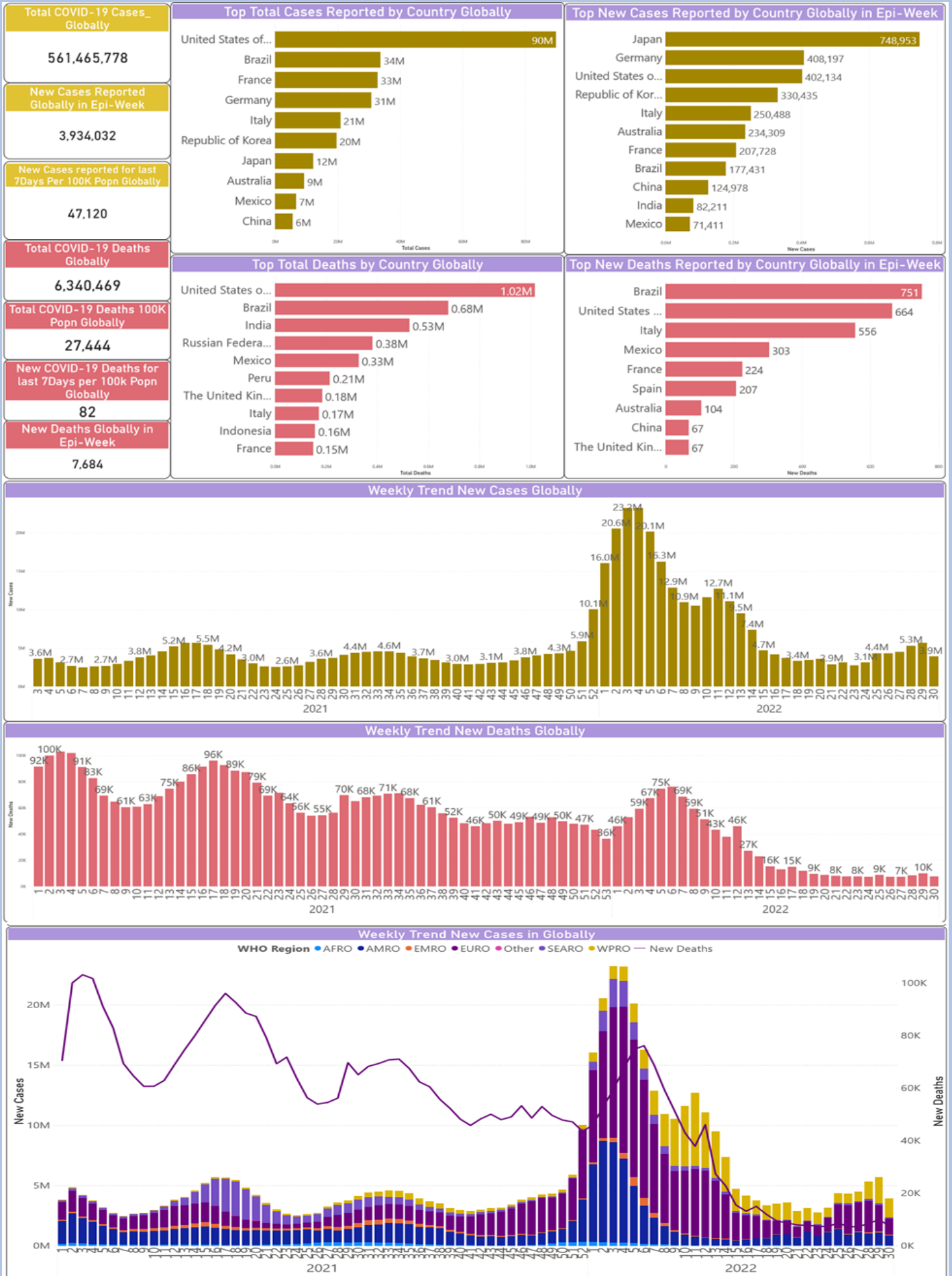


Figure 4: COVID-19 Global Situation Update as of 31 July 2022. (Source: WHO).

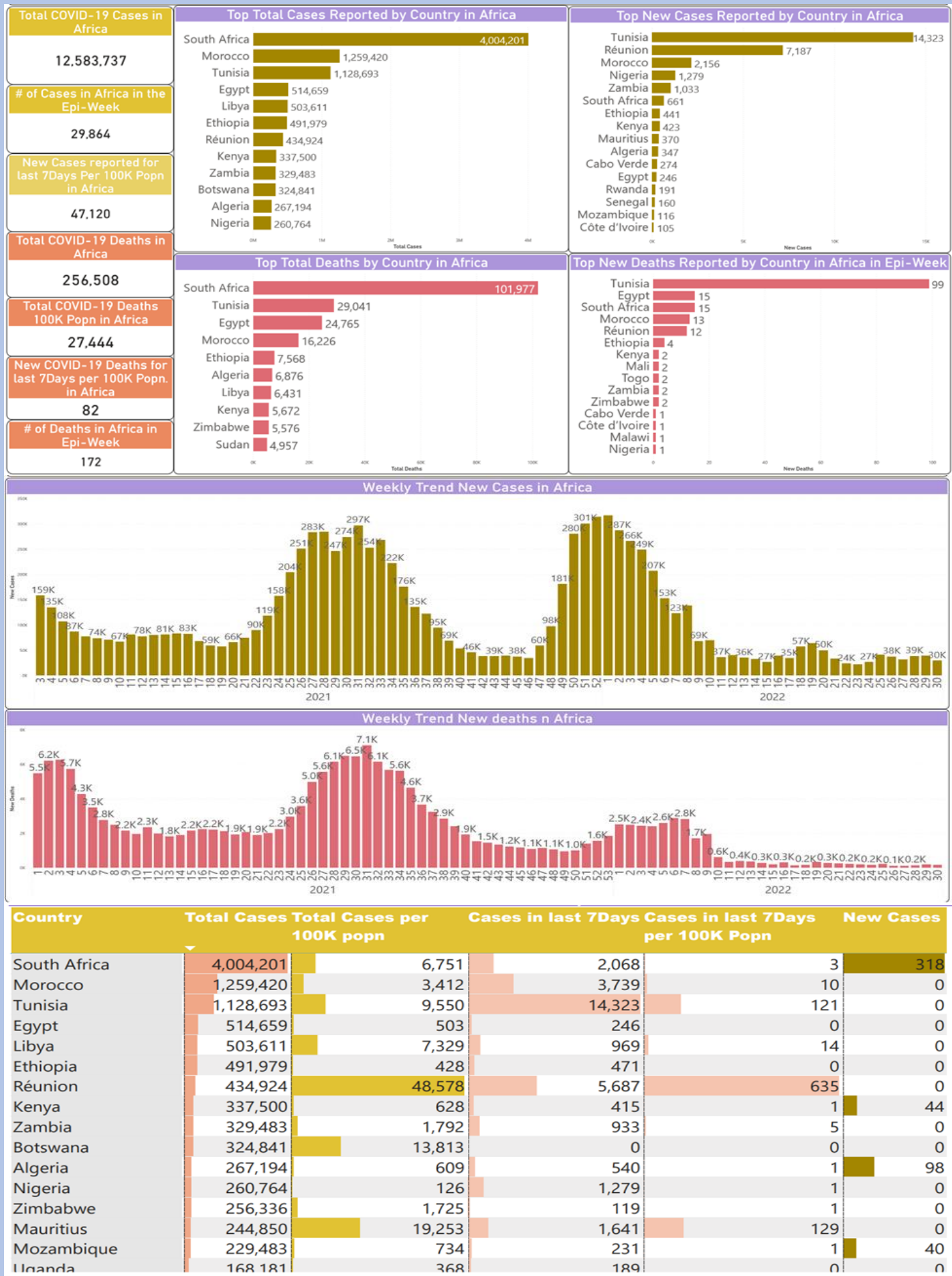


Figure 5: COVID-19 Situation Update in Africa as of 31 July 2022 (Source: WHO)

b. National COVID-19 situation:

- As of 31 July 2022, a total of 492,237 confirmed COVID-19 cases and 7,568 deaths were recorded in the country with a case fatality rate of 1.5%.
- Two new COVID-19-related deaths were reported during the Epi-Week-30.
- Four hundred and seventy-eight (478) newly confirmed COVID-19 cases were reported during the Epi-Week-30.
- In this week, there is 29% decrease in the number of COVID-19 confirmed cases compared to the previous week.
- For detail, see the summary dashboard below.

NB: Data from Tigray regional state is as of June 28, 2021.

SWEP: South West Ethiopia Peoples' Regional State

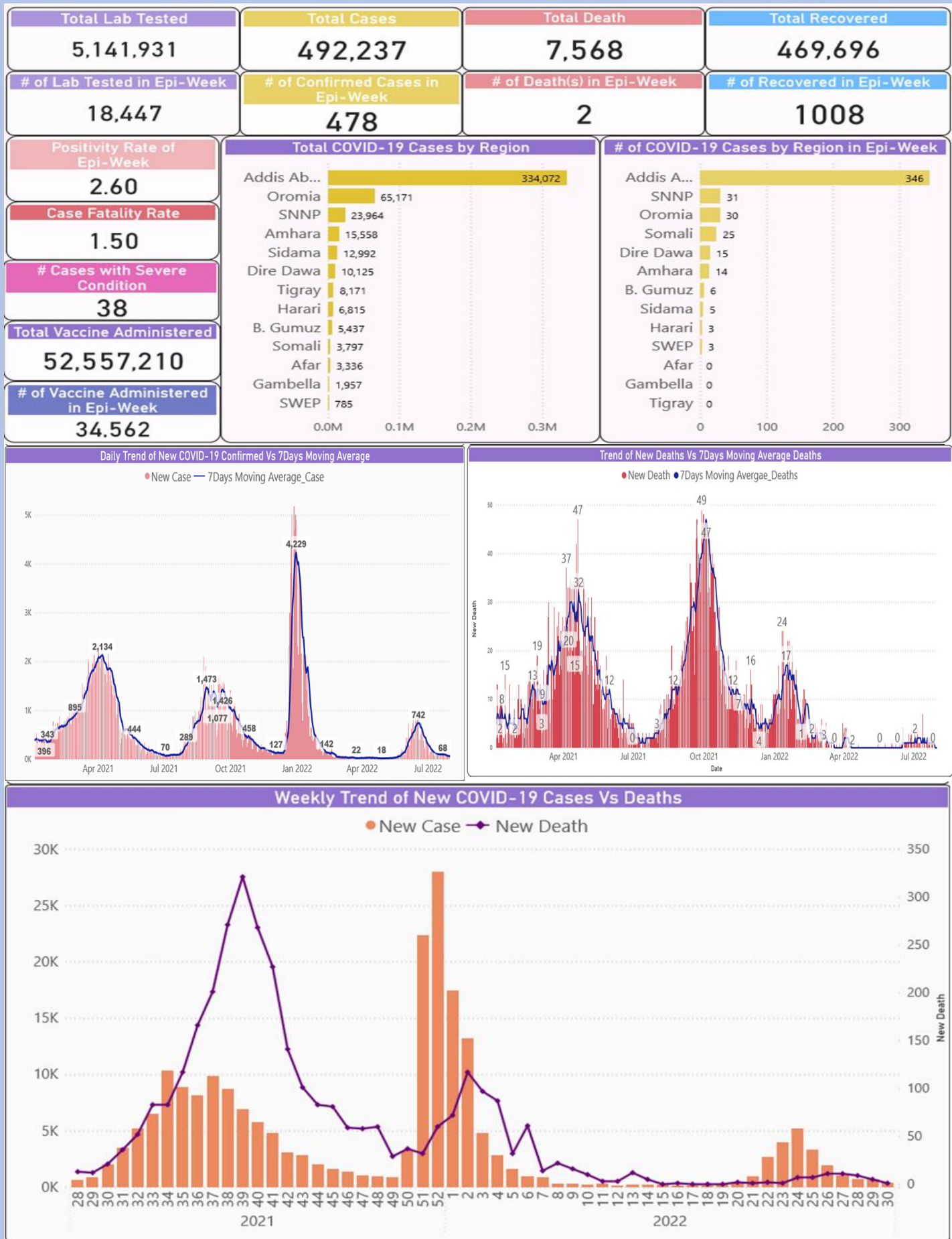


Figure 6: Summary of the COVID-19 situation in Ethiopia as of 31 July 2022, Ethiopia.

c. Other Epi-Surveillance Related Activities

- There is ongoing travelers' health screening at point of entries (PoE), investigation and information provision via toll free call center and follow-up of persons who had contact with confirmed cases. There is also laboratory investigation of suspected cases, contacts of confirmed cases, SARI/pneumonia cases and community members, surveillance, and assessment in school and congregated setting communities.
- From COVID-19 call center, a total of 5945 new call were received of which 1737 were a COVID-19 related health education. (Fig. 7)

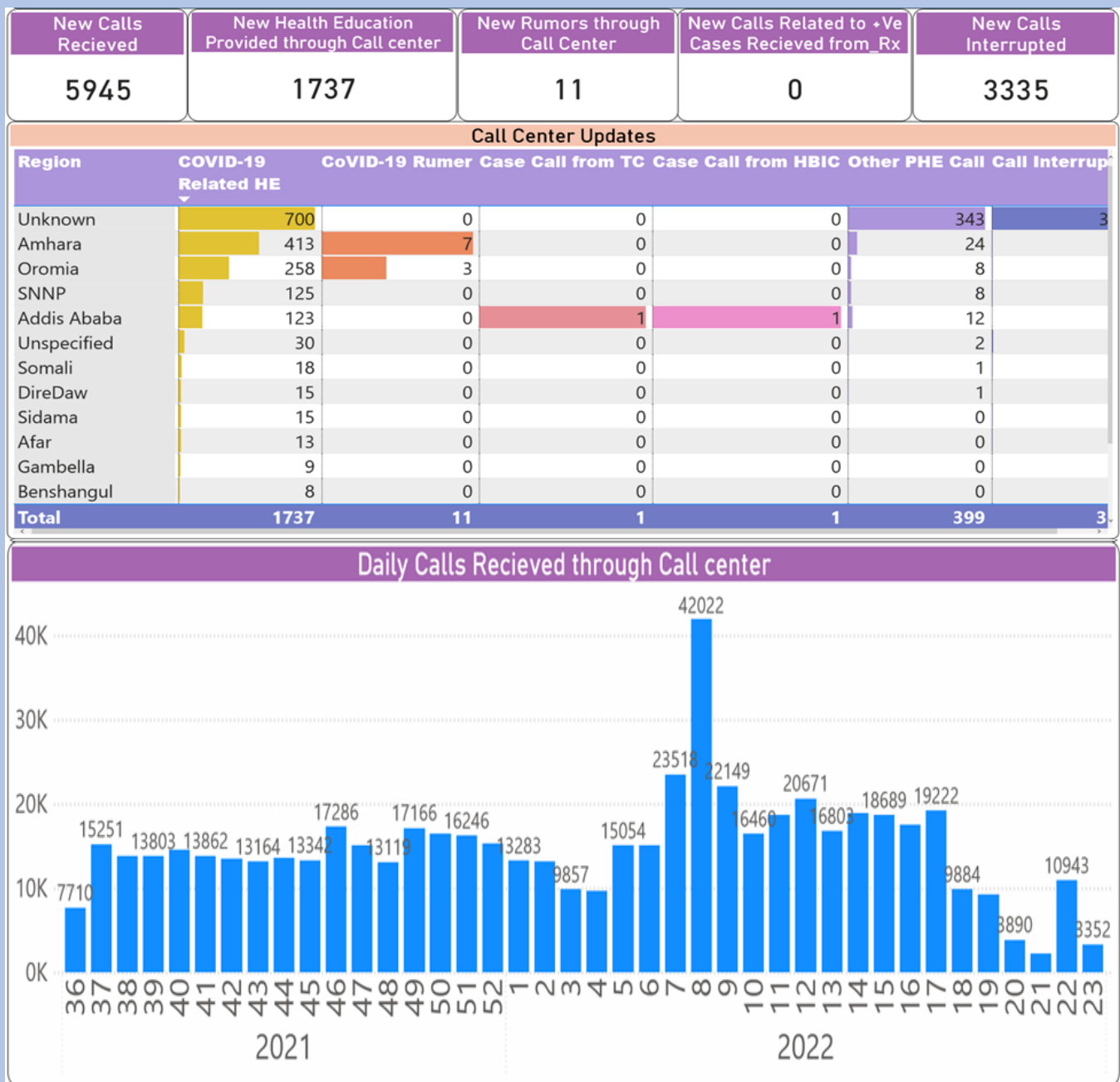
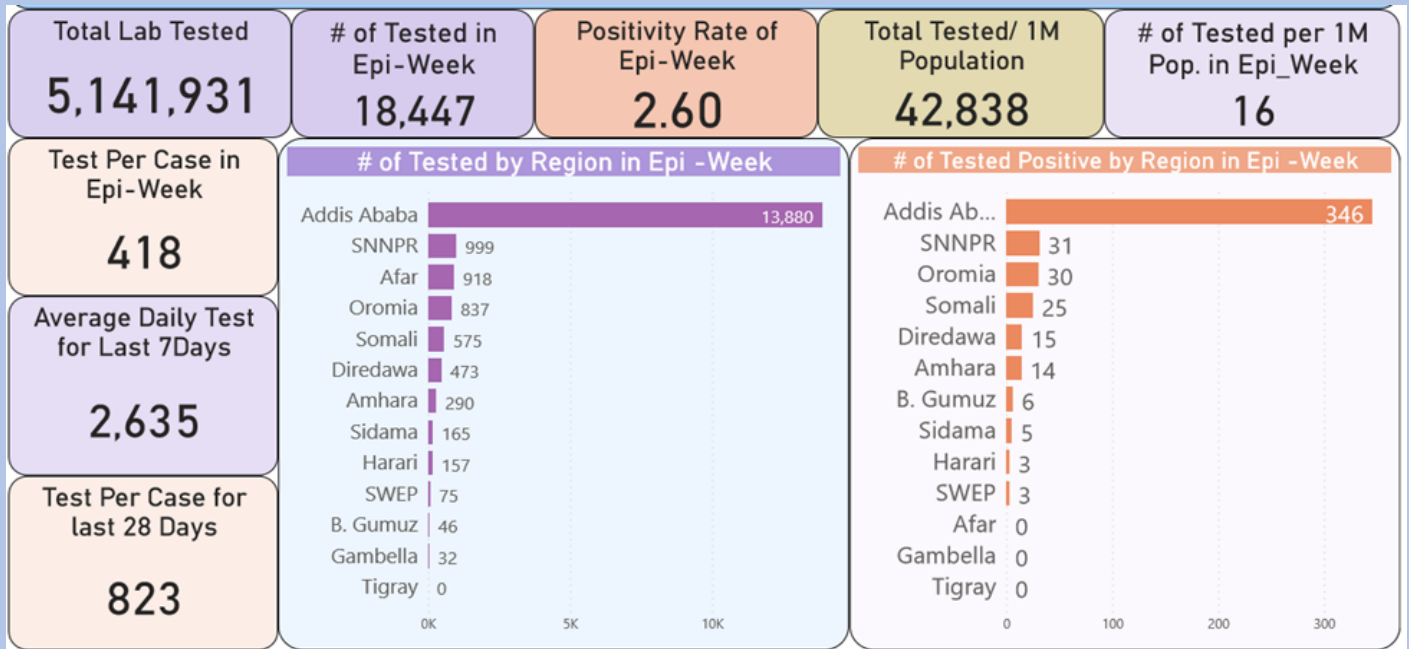


Figure 7: Trend of daily calls received through the contact center (8335)

III. Laboratory related activities

- As of 31 July 2022, a total of 5,141,931 samples have been tested for COVID-19 by laboratories across the country.
- 18,447 laboratory tests were processed during the Epi-Week-30 which is a 3.7 % decrease compared to the number of tests performed in the previous week. Of the total tests in this week, Addis Ababa contributed about 76% of the total tests in week 30.
- Of the total test in the week, 2,667 (14.5%) were conducted using Antigen Rapid Diagnostic Test.
- The laboratory test weight positivity rate for the Epi-Week-30 is 2.6%, which is lower than that of the preceding week (3.5%). However, regions like Benishangul Gumuz and SWEP region reported the highest weight positivity rate of 10.65% and 5.48% respectively.



COVID-19 National Daily Update

Region	New Tested	New Cases	New Death	Positivity Rate	Test contribution	Case contribution
Addis Ababa	13,880	346		2.51	76%	74%
Afar	918	0		0.00	5%	0%
Amhara	290	14		3.40	1%	3%
B. Gumuz	46	6		10.65	0%	1%
Diredawa	473	15		3.70	2%	3%
Gambella	32	0		0.00	0%	0%
Harari	157	3		1.64	1%	1%
Oromia	837	30		3.63	5%	6%
Sidama	165	5		3.36	1%	1%
SNNPR	999	31		3.63	5%	6%
Somali	575	25		4.48	3%	5%
SWEP	75	3		5.48	0%	1%
Tigray	0	0				

*** Positivity Rate is the Average Rates of Regional Distr

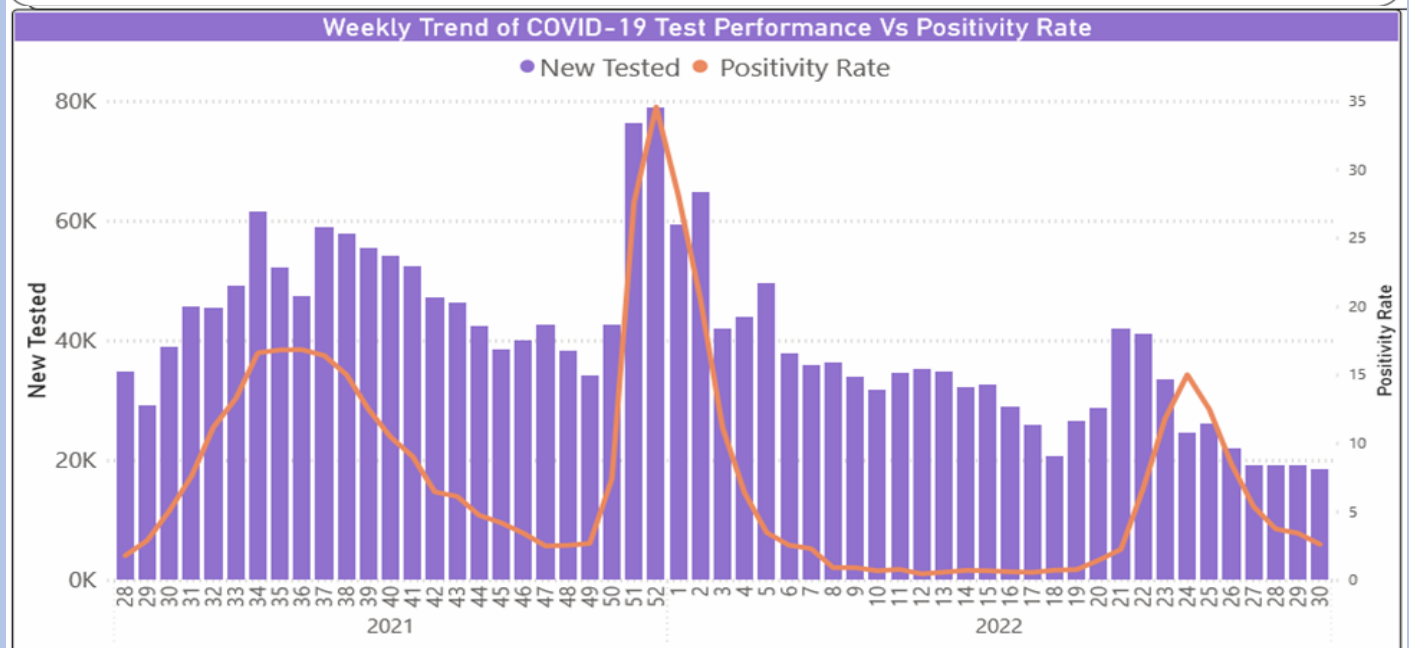
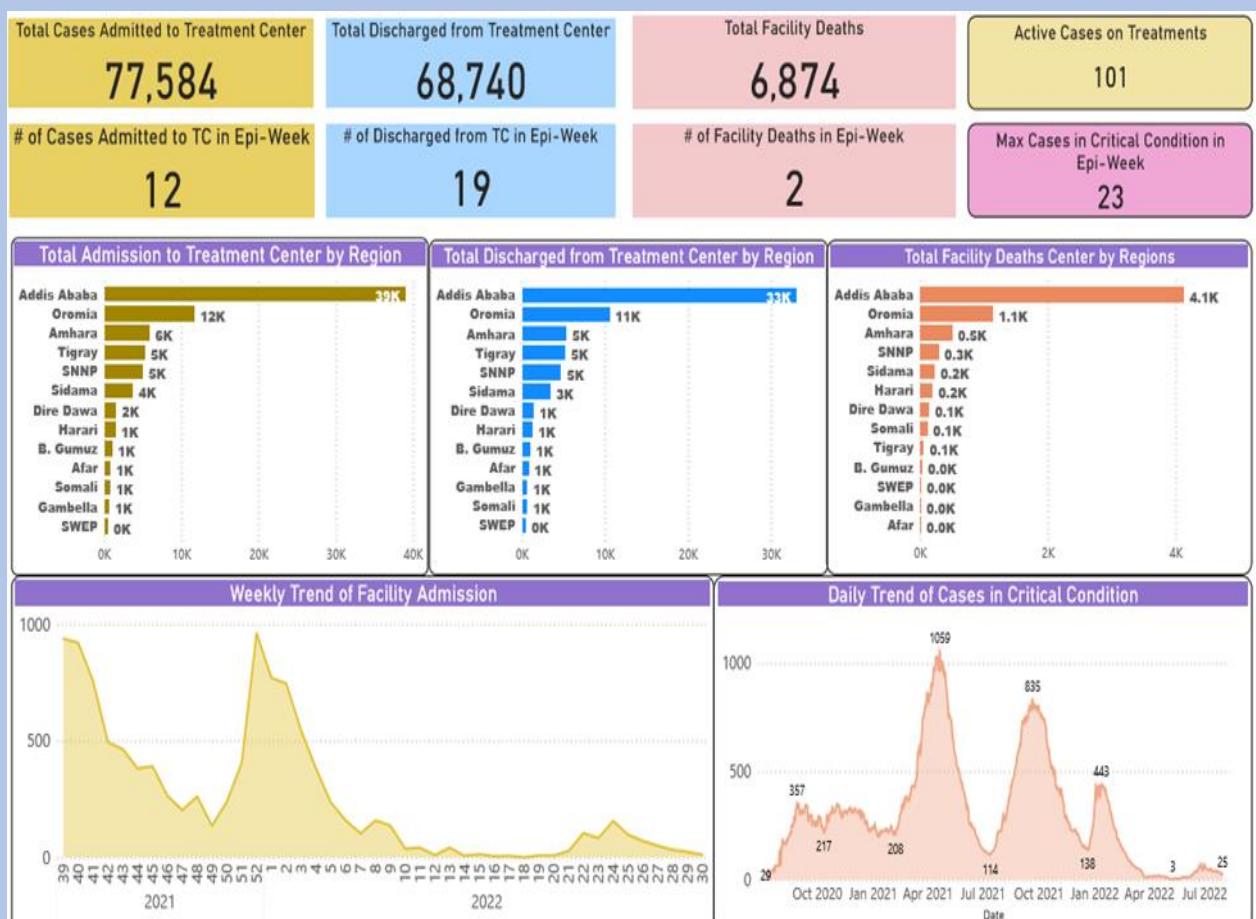


Figure 8: Update on laboratory tests performed as of 31 July 2022

IV. Case Management and Facility Readiness

- As of 31 July 2022, a total of 478,623 cases were admitted to both facility and HBIC, of which 78,466 (16%) were those admitted to treatment center.
- There were total of 1008 newly recovered COVID-19 cases during the Epi-Week-30, bringing the total number of recovered cases to 469,696 (both from COVID-19 treatment center and from HBIC). This brings the overall recovery rate to 95.4%.
- In this week, the maximum number of daily cases in severe and critical condition is 38 and 23 respectively. The maximum number of severe conditions is decreased when compared with the maximum number of daily cases in severe condition in the previous week (43).
- As of 31 July 2022, 2437 (none in the Epi-week-30) of the cases have been transferred from treatment centers to HBIC after improvement, whereas 1355 cases have been transferred from HBIC to treatment center following the worsening of condition.
- Currently, 804 confirmed cases were being enrolled on HBIC, of which 95% (543) were those cases with no symptom.

Figure 9: COVID-19 Situation Updates in COVID-19 treatment centers as of 31 July 2022.



V. Risk Communication and Community Engagement (RCCE)

- Media (mass media and social media) monitoring on COVID-19 related information is ongoing.
- Risk communication and awareness creation activities are ongoing.



- COVID-19 related key messages and updates shared on social media.

Figure 10: COVID-19 situation updates as of 31 July 2022 shared on social media.

VI. Coordination and Leadership

- The national PHEOC is collaboratively working with stakeholders: government agencies, partner organizations, UN agencies, embassies, hospitals, Industrial parks, and others.
- Morning briefing of IMS is being conducted every day by core IMS staffs and key partners' representatives.
- Joint meeting is ongoing once in two weeks, among the national and regional Emergency Operations Centers COVID-19 response IMS (Incident Management System) to evaluate weekly COVID-19 situations, progress of response strategies, challenges faced and way forwards.
- The virtual meeting of Joint Steering Committee encompassing MOH, Agencies and RHB top leadership under the leadership of H.E Minister of Health is also ongoing.
- A country wide survey that could show the current distribution of COVID-19 is ongoing.
- The Ministry of Health and the Ethiopian Public Health Institute jointly issued a press conference on the current situation of COVID-19, monkeypox, malaria and measles.



Figure 11. Joint press release by EPHI and MOH on the current public health emergencies.

VII.

COVID-19 Vaccination

- As of 31 July 2022, a total of 43,122,195 people vaccinated, bringing overall coverage of 64.6% and 40.3% from target and total population respectively. In addition, nearly 35% people received complete dose of vaccine as of 31 July 2022.
- About 52,557,210 vaccine dose was administered as of 31 July 2022.

VIII. Public Health Policy Recommendation

Advice for the Public:

- For any individual confirmed to have COVID-19 and who is candidate for Home Based Isolation and Care:
 - Properly isolate from other family members.
 - Take full responsibility in prevention of transmission
 - Strictly adhere to the National Directive of Home-Based Isolation & Care.
 - Provide reliable information during regular follow up either by phone or home visit.
 - Report to nearest health facilities/follow up team in case of any emergency, appearance of new symptoms or worsening of existing symptoms.
- It is important to be informed of the situation and act appropriately to protect yourself and your family.
 - Wash hands frequently.
 - Don't touch your mouth, nose, or eye by unwashed hands.
 - Keep physical distancing; avoid mass gathering and shaking hands.
 - Get vaccinated against COVID-19.
- For most people, COVID-19 infection will cause mild illness however, it can make some people very ill, and in some people, it can be fatal.
- Older people, and those with pre-existing medical conditions (such as cardiovascular disease, chronic respiratory disease, or diabetes) are at risk for severe disease.
- If anybody had contact with a COVID-19 confirmed patient, he/she should call 8335 or report to regional toll-free lines or to the nearby health facilities.

National/Regional official websites, social media pages and toll-free hotline for PHE information

MOH/EPHI/Region	Facebook page	Toll-free hotline	Email address (PHEOCs email)
Ethiopian Public Health Institute Main Website	https://www.ephi.gov.et/	8335	ephieoc@gmail.com
Ethiopian Public Health Institute COVID-19 Website	https://covid19.ephi.gov.et/		
Ethiopian Public Health Institute PHE Information Webportal	www.phem.gov.et	8335	ephieoc@gmail.com
Ethiopian Public Health Institute Facebook Page	https://www.facebook.com/ephipa ge/		
Ethiopian Public Health Institute Twitter Page	https://twitter.com/EPHIethiopia		
Ethiopian Public Health Institute Telegram Channel	https://t.me/EthPHI		
Ethiopian Public Health Institute YouTube Channel	https://www.youtube.com/channel/UCvTzeY-IJiQfEFBULH9Mkw		
Ministry of Health, Ethiopia Website	www.moh.gov.et	952	
Ministry of Health, Ethiopia Facebook Page	https://www.facebook.com/EthiopiaFMoH/		
Afar Regional Health Bureau	https://www.facebook.com/afarrhb .org/	6220	afarpheoc@gmail.com
Amhara Regional Health Bureau	https://www.facebook.com/Amhara-Healthbureau-682065755146948/	6981	aphieoc@gmail.com
Benishangul Gumuz Regional Health Bureau	https://www.facebook.com/Benishangul-Gumuz-Health-Bureau-1676282159265517/	6016	bgpheoc@gmail.com
Gambela Regional Health Bureau	https://fb.me/gambellaregionhealthbureau	6184	gambellapheoc@gmail.com
Harari Regional Health Bureau	https://www.facebook.com/Harari-Regional-Health-Bureau-1464182130355007/	6864	hrrhpheoc@gmail.com
Oromia Regional Health Bureau	https://www.facebook.com/OromiaHealth/	6955	oromiapheoc@gmail.com
Somali Regional Health Bureau	https://www.facebook.com/srhbdot com/...	6599	somalipheoc@gmail.com
SNNP Regional Health Bureau	https://www.facebook.com/snnprhealthbureau/?ref=br_rs	6929	snnppheoc@gmail.com
Tigray Regional Health Bureau	https://www.facebook.com/tigrayrhb/	6244	tigraypheoc@gmail.com
Sidama PHEM		7794	sidaamapheoc@gmail.com
South West Ethiopian RHB PHEM			swepheoc@gmail.com
Dire Dawa city Administration Health Bureau	https://www.facebook.com/Dire-Dawa-Administration-Health-Bureau-1371606266279524/	6407	ddpheoc@gmail.com
Addis Ababa City Administration Health Bureau	https://www.facebook.com/aaahb.gov.et/	6406	aapheoc@gmail.com

COVID-19 updates and sources of evidence:

Source	Link
WHO Coronavirus (COVID-19) dashboard	https://covid19.who.int/
Africa CDC Dashboard, COVID-19 Surveillance Dashboard	https://au.int/en/covid19
WHO COVID-19 daily situation reports	https://www.who.int/emergencies/diseases/novel-coronavirus-2019/situation-reports
WHO Academy mobile learning app for health workers, COVID-19 information	Android- https://play.google.com/store/apps/details?id=org.who.WHOA Apple- https://apps.apple.com/us/app/who-academy/id1506019873



The above presented Quick Reader (QR) code takes you to a portal that you can access updates and all COVID-19 related information available (<https://covid19.ephi.gov.et/covid-19/>)

DISCLAIMER

This weekly bulletin is produced based on figures pulled from official releases of the World Health Organization and activities and reports of all the sections under the Incident management System.

This Weekly Bulletin series of publications is published by the Ethiopian public health Institute (EPHI), public health emergency operation center (PHEOC). The aim of this bulletin is to inform decision makers within the institute and FMOH, UN agencies and NGOs about COVID-19 preparedness and response activities.

All interested health and other professionals can get this bulletin at the Institute website; www.ephi.gov.et

PREPARED BY

Assegid Tesfaye (Bsc, MPH in Field Epidemiology) – Planning Section, Technical Assistant
Negusse Yohannes (PhD in Statistics) – Planning Section, Situation Unit Member

REVIEWED BY

Zerihun Kassa (MD, MPH) - Planning Section and Administration Focal
Shambel Habebe (MPH) – Deputy Incident Manager, Case Management Section Focal
Zewdu Assefa (MPH) – PHE Early Warning and Information System Management P/D/A/Director
Aschalew Abayneh (RN, BSc, MPH) - DDG-EPHI, Incident Manager

**National COVID-19 Response Incident Management system, Emergency Operation Center
FOR MORE INFORMATION and NOTIFICATION**

Web: www.ephi.gov.et

Follow us on Twitter: @EPHIEthiopia

Facebook: <https://www.facebook.com/ephipage/>

Telegram: <https://t.me/EthPHI>

Call: 8335 (TOLL FREE LINE) or 011 276 5340

Email: ephieoc@gmail.com or pheodatacenter@gmail.com