



## NATIONAL PUBLIC HEALTH EMERGENCY OPERATION CENTER (PHEOC), ETHIOPIA

### COVID-19 PANDEMIC PREPAREDNESS AND RESPONSE IN ETHIOPIA

## WEEKLY BULLETIN

Epi-Week - 33 (15 – 21 August 2022)

BULLETIN №: 121

## I. Highlights

- A total of 13,526 laboratory samples were tested in the week-33, bringing the total number of samples tested to 5,184,494.
- As of 21 August 2022, a total of 492,968 COVID-19 confirmed cases had been detected. Of these, 215 were new cases reported in the Epi-week 33.
- About 471,293 (95.6%) confirmed cases have been recovered, and cumulative of 7,571 death have been reported as of 21 August 2022. No new death reported in the week 33.
- In this week the maximum number of daily cases in severe conditions is 14 which are lower than the maximum number of daily cases in severe condition in the previous week (21).
- As of 21 August 2022, a total of 43,131,421 people vaccinated at least one dose of vaccine, bringing overall coverage of 64.6% and 40.3% from target and total population respectively.

## II. Epidemiological Situation

### a. Global Situation

- Globally, the number of new weekly cases decreased by 9% during the week of 15 to 21 August 2022, as compared to the previous week, with over 5.3 million new cases reported (Figure 1).
- The number of new weekly deaths decreased by 15%, as compared to the previous week, with over 14 000 fatalities reported.
- As of 21 August 2022, 593 million confirmed cases and 6.4 million deaths have been reported globally. At the regional level, the number of reported new weekly cases decreased or remained stable across all six regions: the African Region (-25%), the European Region (-20%), the Region of the Americas (-18%), the South East Asia Region (-17%), the Eastern Mediterranean Region (-13%), and the Western Pacific Region (+2%).
- The number of new weekly deaths increased in the African Region (+183%) and the Western Pacific Region (+8%), while it decreased or remained stable in the European Region (-30%), the Region of the Americas (-15%), the South-East Asia Region (-11%), and the Eastern Mediterranean Region (+3%).
- Current trends in reported COVID-19 cases and deaths should be interpreted with caution as several countries have been progressively changing COVID-19 testing strategies, resulting in lower overall numbers of tests performed and consequently lower numbers of cases detected.
- Globally, from 22 July to 22 August 2022, 162 215 SARS-CoV-2 sequences were shared through GISAID. Among these, 160 716 sequences were the Omicron Variant of Concern (VOC), accounting for 99% of sequences reported globally in the past 30 days.

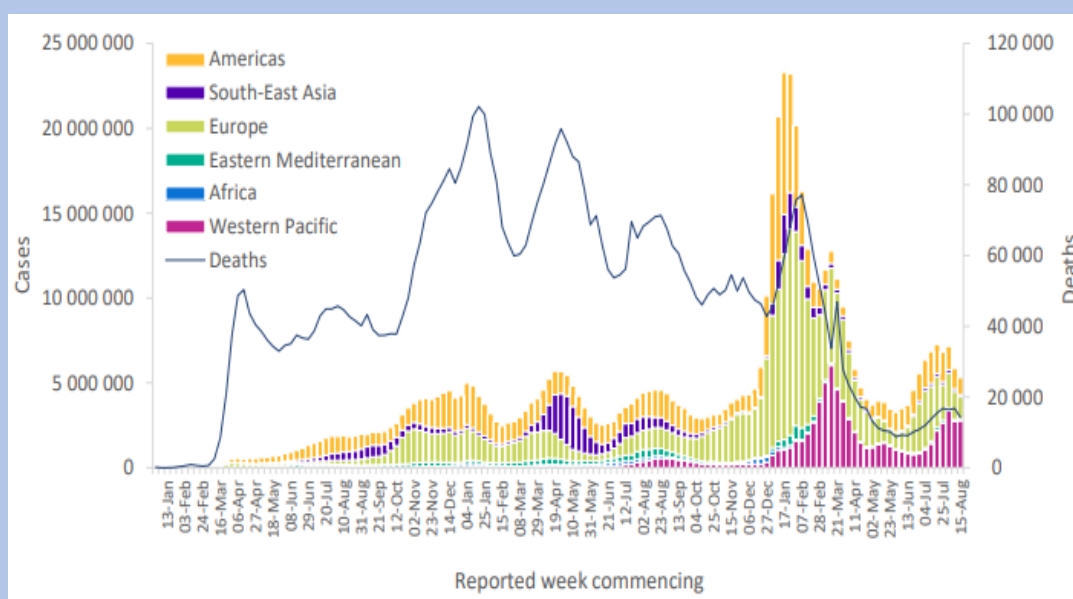


Figure 1: COVID-19 case reported weekly by WHO Region, and global deaths, as of 21 August 2022. (Source: WHO)

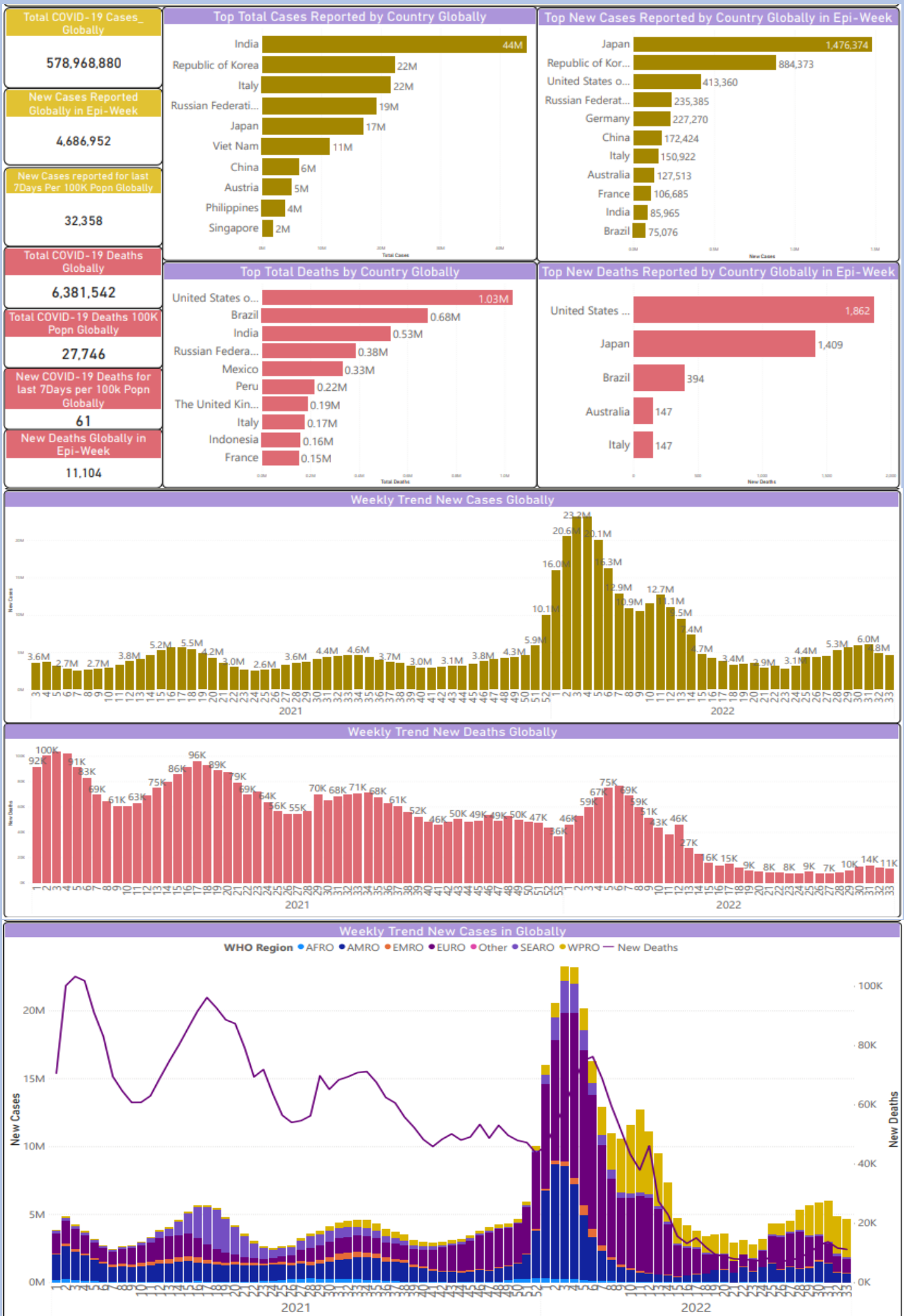


Figure 2: COVID-19 Global Situation Update as of 21 August 2022. (Source: WHO).

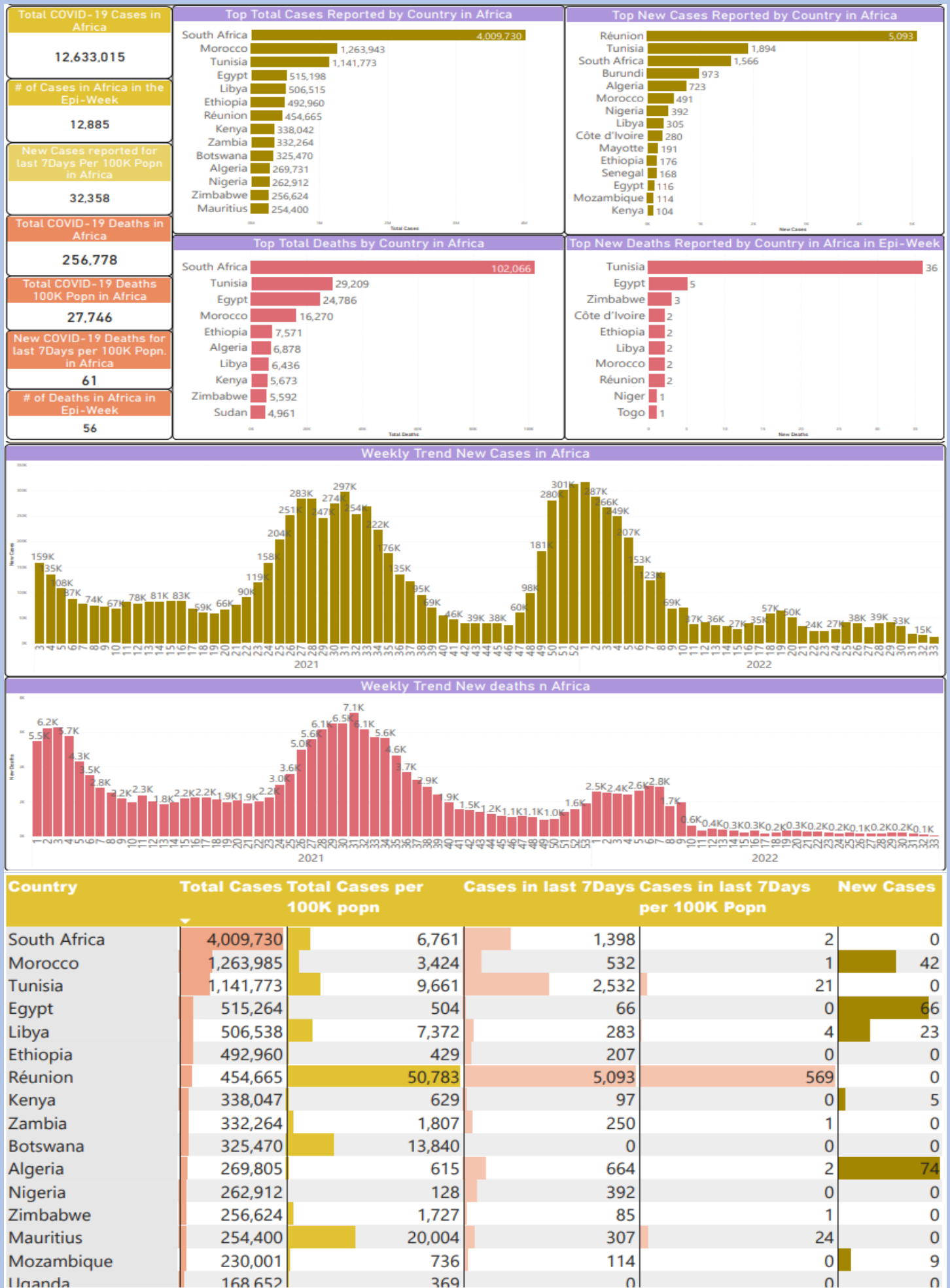


Figure 3: COVID-19 Situation Update in Africa as of 21 August 2022 (Source: Africa CDC)

## **b. National COVID-19 situation:**

- As of 21 August 2022, a total of 492,968 confirmed COVID-19 cases and 7,571 deaths were recorded in the country with a case fatality rate of 1.5%.
- No new COVID-19-related deaths were reported during the Epi-Week-33.
- Two hundred and fifteen (215) newly confirmed COVID-19 cases were reported during the Epi-Week-33.
- In this week, there is 18% decrease in the number of COVID-19 confirmed cases compared to the previous week.
- Addis Ababa contributed 62.8% (135) cases reported in Epi Week 33. Afar region, South West Ethiopia peoples region, Sidama region and Harari region reported zero case in a week
- For detail, see the summary dashboard below.

NB: Data from Tigray regional state is as of June 28, 2021.

SWEP: South West Ethiopia Peoples' Regional State





### c. Other Epi-Surveillance Related Activities

- There is ongoing travelers' health screening at point of entries (PoE), investigation and information provision via toll free contact center and follow-up of persons who had contact with confirmed cases. There is also laboratory investigation of suspected cases, contacts of confirmed cases, SARI/pneumonia cases and community members, surveillance, and assessment in school and congregated setting communities.
- From COVID-19 call center, a total of 5945 new call were received of which 1737 were a COVID-19 related health education. (Fig. 5)

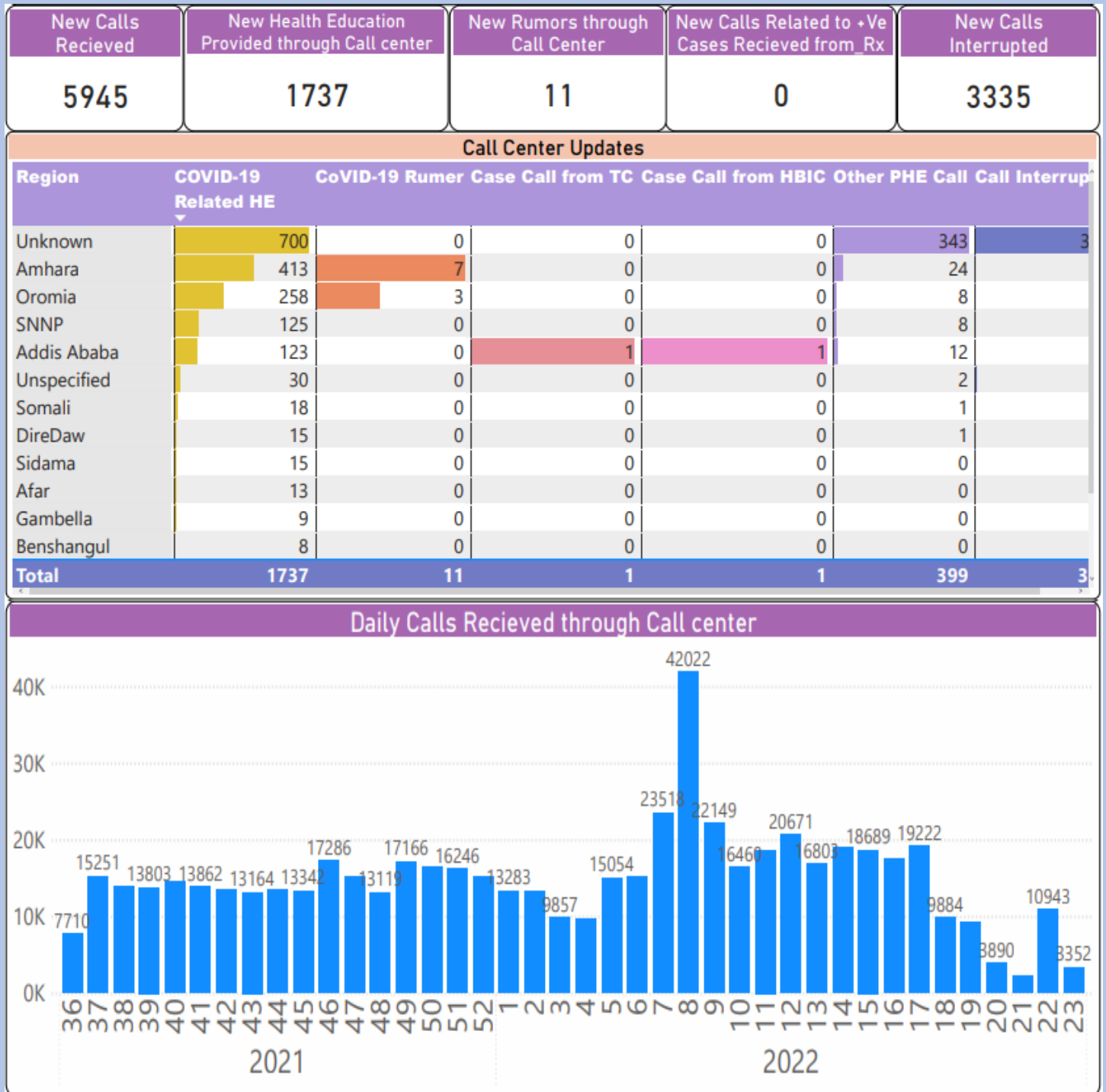
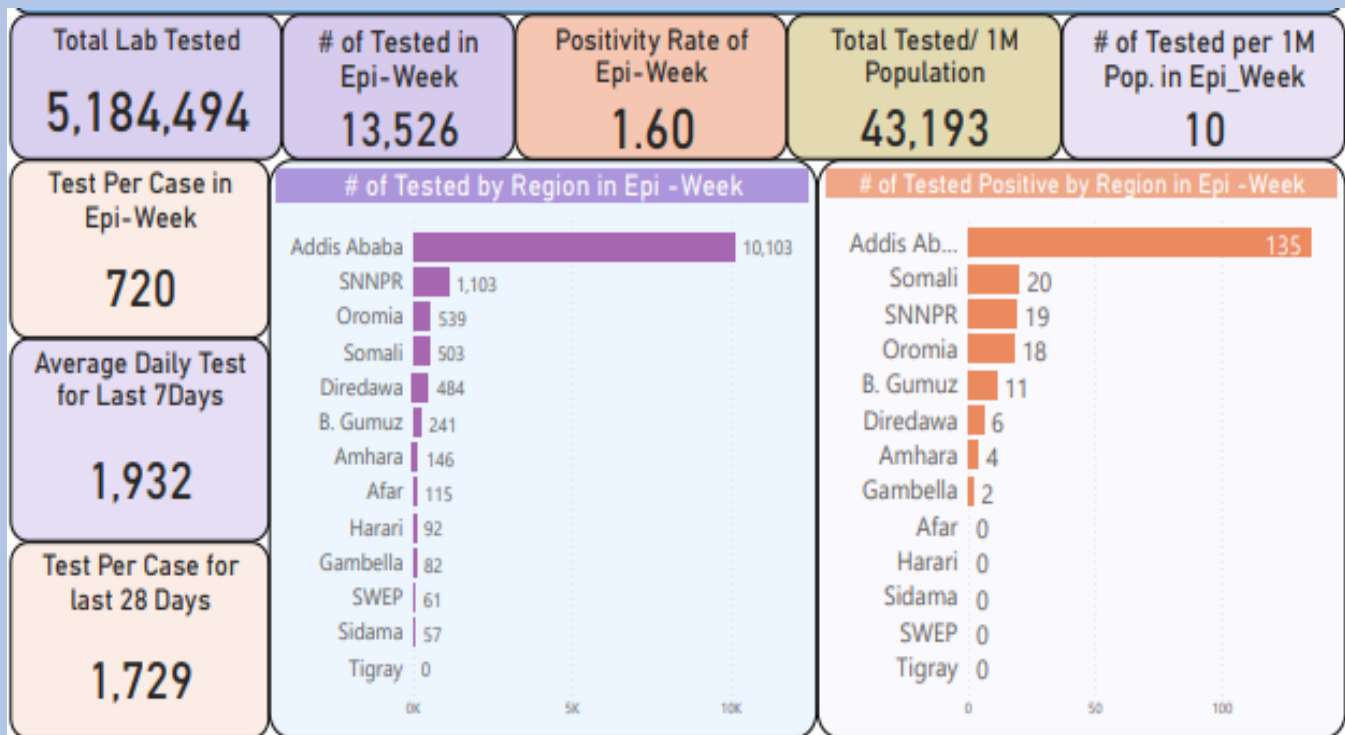


Figure 5: Trend of daily calls received through the contact center (8335)

### III. Laboratory related activities

- As of 21 August 2022, a total of 5,184,494 samples have been tested for COVID-19 by laboratories across the country.
- 13,526 laboratory tests were processed during the Epi-Week-33 which showed decrease by 5.6% compared with the tests performed in the previous week. Of the total tests in this week, Addis Ababa contributed about 75% of the total tests in week 33.
- Of the total test in the week, 2,014 (14.8%) were conducted using Antigen Rapid Diagnostic Test.
- The laboratory test weight positivity rate for the Epi-Week-33 is 1.54%, which is lower than that of the preceding week (1.84%). However, the highest positivity rate 4.6% and 3.6% were reported from Benishangul Gumuz and Oromia region respectively.





Region	New Tested	New Cases	New Death	Positivity Rate	Test contribution	Case contribution
Addis Ababa	10,103	135		1.30	76%	65%
Somali	503	20		3.28	4%	7%
SNNPR	1,103	19		1.70	8%	10%
Oromia	539	18		3.60	4%	9%
B. Gumuz	241	11		4.55	2%	4%
Diredawa	484	6		1.00	3%	3%
Amhara	146	4		2.13	1%	2%
Gambella	82	2		1.45	1%	1%
Afar	115	0		0.00	1%	0%
Harari	92	0		0.00	1%	0%
Sidama	57	0		0.00	0%	0%
SWEP	61	0		0.00	0%	0%
Tigray	0	0				

\*\*\* Positivity Rate is the Average Rates of Regional Distn

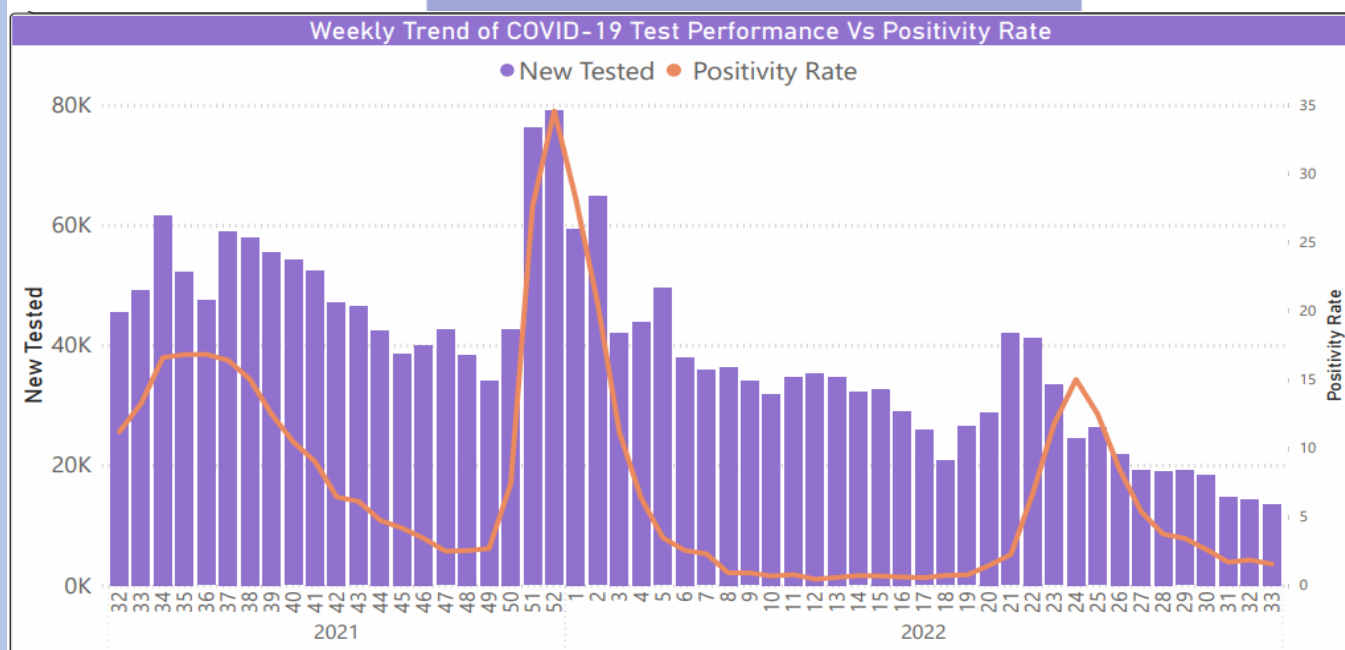


Figure 6: Update on laboratory tests performed as of 21 August 2022.

## IV. Case Management and Facility Readiness

- As of 21 August 2022, a total of 480,001 cases were admitted to both facility and HBIC, of which 77,599 (16%) were those admitted to treatment center. Only five (5) cases were admitted to treatment center in week 33.
- About 277 newly recovery cases were reported during the Epi-Week-33, bringing the total number of recovered cases to 471,293 (both from COVID-19 treatment center and from HBIC). This brings the overall recovery rate to 95.6%.
- In this week, the maximum number of daily cases in severe and critical condition is 14 and 10 respectively. The maximum number of cases in severe conditions is decreased when compared with the maximum number of daily cases in severe condition in the previous week (21).
- As of 21 August 2022, 2437 (none in the Epi-week-33) of the cases have been transferred from treatment centers to HBIC after improvement, whereas 1355 cases have been transferred from HBIC to treatment center following the worsening of condition to date.
- About 88% and 12% of the total case who enrolled on HBIC were asymptomatic and mild cases respectively.

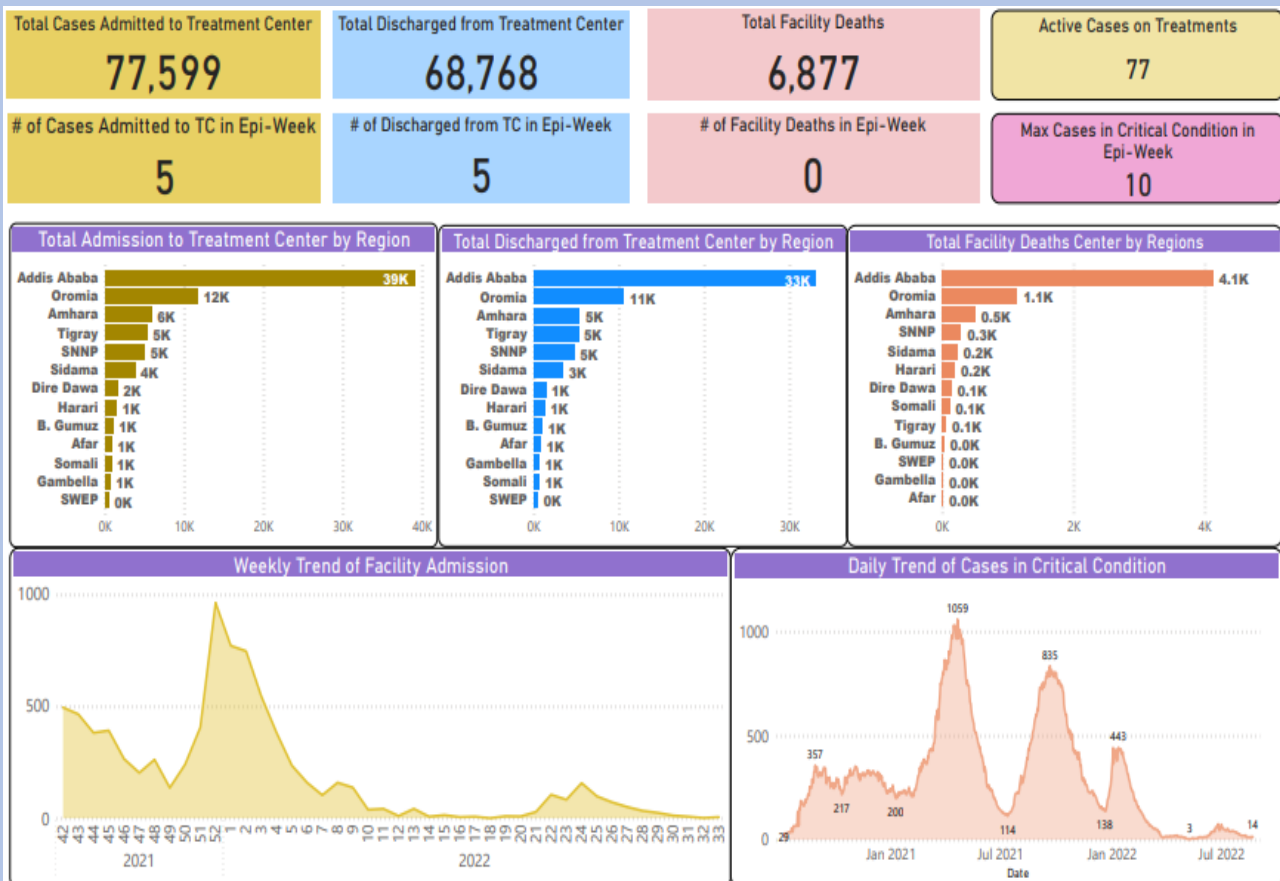


Figure 7: COVID-19 Situation Updates in COVID-19 treatment centers as of 21 August 2022.

## V. Risk Communication and Community Engagement (RCCE)

- Media (mass media and social media) monitoring on COVID-19 related information is ongoing.
- Risk communication and awareness creation activities are ongoing.
- COVID-19 related key messages and updates shared on social media.

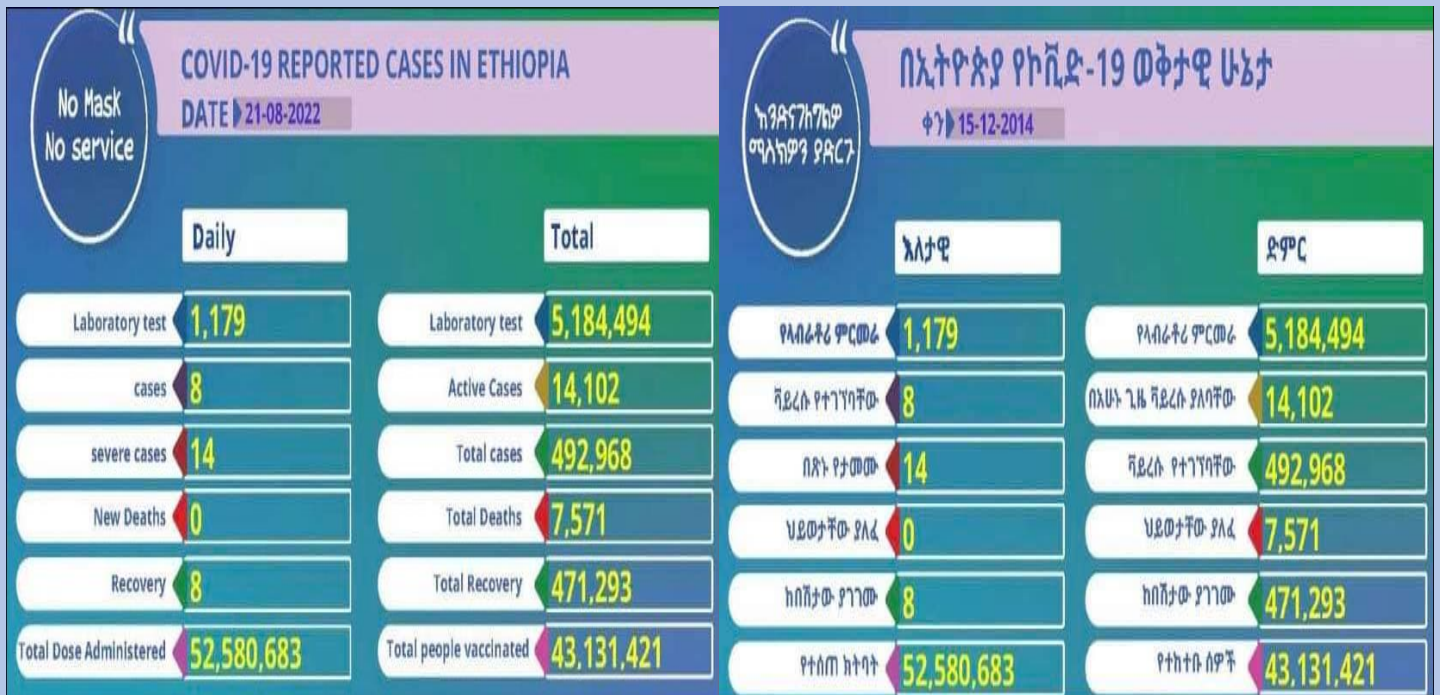


Figure 8: COVID-19 situation updates as of 21 August 2022 shared on social media.

## **VI. Coordination and Leadership**

- The national PHEOC is collaboratively working with stakeholders: government agencies, partner organizations, UN agencies, embassies, hospitals, Industrial parks, and others.
- Morning briefing of IMS is being conducted every day by core IMS staffs and key partners' representatives.
- Joint meeting is ongoing once in two weeks, among the national and regional Public Health Emergency Operations Centers COVID-19 response IMS (Incident Management System) to evaluate weekly COVID-19 situations, progress of response strategies, challenges faced and way forwards.

## VII.

### COVID-19 Vaccination

- As of 21 August 2022, a total of 52,580,683 COVID vaccine dose was administered and 43,131,421 people vaccinated at least one dose of vaccine, bringing overall coverage of 64.6% and 40.3% from target and total population respectively.
- As of 21 August 2022, nearly 35% and 55% people received full dose of vaccine from the total and target population respectively.
- A total of 19,901 vaccine dose was administered in Epi-week 33.

## VIII. Public Health Policy Recommendation

### Advice for the Public:

- For any individual confirmed to have COVID-19 and who is candidate for Home Based Isolation and Care:
  - Properly isolate from other family members.
  - Take full responsibility in prevention of transmission
  - Strictly adhere to the National Directive of Home-Based Isolation & Care.
  - Provide reliable information during regular follow up either by phone or home visit.
  - Report to nearest health facilities/follow up team in case of any emergency, appearance of new symptoms or worsening of existing symptoms.
- It is important to be informed of the situation and act appropriately to protect yourself and your family.
  - Wash hands frequently.
  - Don't touch your mouth, nose, or eye by unwashed hands.
  - Keep physical distancing; avoid mass gathering and shaking hands.
  - Get vaccinated against COVID-19.
- For most people, COVID-19 infection will cause mild illness however, it can make some people very ill, and in some people, it can be fatal.
- Older people and those with pre-existing medical conditions (such as cardiovascular disease, chronic respiratory disease, or diabetes) are at risk for severe disease.
- If anybody had contact with a COVID-19 confirmed patient, he/she should call 8335 or report to regional toll-free lines or to the nearby health facilities.

**National/Regional official websites, social media pages and toll-free hotline for public health emergency (PHE) information**

MOH/EPHI/Region	Facebook page	Toll-free hotline	Email address (PHEOCs email)
Ethiopian Public Health Institute Main Website	<a href="https://www.ephi.gov.et/">https://www.ephi.gov.et/</a>	8335	<a href="mailto:ephieoc@gmail.com">ephieoc@gmail.com</a>
Ethiopian Public Health Institute COVID-19 Website	<a href="https://covid19.ephi.gov.et/">https://covid19.ephi.gov.et/</a>		
Ethiopian Public Health Institute PHE Information Webportal	<a href="http://www.phem.gov.et">www.phem.gov.et</a>	8335	<a href="mailto:ephieoc@gmail.com">ephieoc@gmail.com</a>
Ethiopian Public Health Institute Facebook Page	<a href="https://www.facebook.com/ephipa ge/">https://www.facebook.com/ephipa ge/</a>		
Ethiopian Public Health Institute Twitter Page	<a href="https://twitter.com/EPHIEthiopia">https://twitter.com/EPHIEthiopia</a>		
Ethiopian Public Health Institute Telegram Channel	<a href="https://t.me/EthPHI">https://t.me/EthPHI</a>		
Ethiopian Public Health Institute YouTube Channel	<a href="https://www.youtube.com/channel/UCvTzeY-IJiQfEFBULH9Mkw">https://www.youtube.com/channel/UCvTzeY-IJiQfEFBULH9Mkw</a>		
Ministry of Health, Ethiopia Website	<a href="http://www.moh.gov.et">www.moh.gov.et</a>	952	
Ministry of Health, Ethiopia Facebook Page	<a href="https://www.facebook.com/EthiopiaFMoH/">https://www.facebook.com/EthiopiaFMoH/</a>		
Afar Regional Health Bureau	<a href="https://www.facebook.com/afarrhb .org/">https://www.facebook.com/afarrhb .org/</a>	6220	<a href="mailto:afarpheoc@gmail.com">afarpheoc@gmail.com</a>
Amhara Regional Health Bureau	<a href="https://www.facebook.com/Amhara-Healthbureau-682065755146948/">https://www.facebook.com/Amhara-Healthbureau-682065755146948/</a>	6981	<a href="mailto:aphieoc@gmail.com">aphieoc@gmail.com</a>
Benishangul Gumuz Regional Health Bureau	<a href="https://www.facebook.com/Benishangul-Gumuz-Health-Bureau-1676282159265517/">https://www.facebook.com/Benishangul-Gumuz-Health-Bureau-1676282159265517/</a>	6016	<a href="mailto:bgpheoc@gmail.com">bgpheoc@gmail.com</a>
Gambela Regional Health Bureau	<a href="https://fb.me/gambellaregionhealth bureau">https://fb.me/gambellaregionhealth bureau</a>	6184	<a href="mailto:gambellapheoc@gmail.com">gambellapheoc@gmail.com</a>
Harari Regional Health Bureau	<a href="https://www.facebook.com/Harari-Regional-Health-Bureau-1464182130355007/">https://www.facebook.com/Harari-Regional-Health-Bureau-1464182130355007/</a>	6864	<a href="mailto:hrrhpheoc@gmail.com">hrrhpheoc@gmail.com</a>
Oromia Regional Health Bureau	<a href="https://www.facebook.com/Oromia Health/">https://www.facebook.com/Oromia Health/</a>	6955	<a href="mailto:oromiapheoc@gmail.com">oromiapheoc@gmail.com</a>
Somali Regional Health Bureau	<a href="https://www.facebook.com/srhbdot com/">https://www.facebook.com/srhbdot com/...</a>	6599	<a href="mailto:somalipheoc@gmail.com">somalipheoc@gmail.com</a>
SNNP Regional Health Bureau	<a href="https://www.facebook.com/snnprhealthbureau/?ref=br_rs">https://www.facebook.com/snnprhealthbureau/?ref=br_rs</a>	6929	<a href="mailto:snnppheoc@gmail.com">snnppheoc@gmail.com</a>
Tigray Regional Health Bureau	<a href="https://www.facebook.com/tigrayrh b/">https://www.facebook.com/tigrayrh b/</a>	6244	<a href="mailto:tigraypheoc@gmail.com">tigraypheoc@gmail.com</a>
Sidama PHEM		7794	<a href="mailto:sidaamapheoc@gmail.com">sidaamapheoc@gmail.com</a>
South West Ethiopian RHB PHEM			<a href="mailto:swepheoc@gmail.com">swepheoc@gmail.com</a>
Dire Dawa city Administration Health Bureau	<a href="https://www.facebook.com/Dire-Dawa-Administration-Health-Bureau-1371606266279524/">https://www.facebook.com/Dire-Dawa-Administration-Health-Bureau-1371606266279524/</a>	6407	<a href="mailto:ddpheoc@gmail.com">ddpheoc@gmail.com</a>
Addis Ababa City Administration Health Bureau	<a href="https://www.facebook.com/aaahb.gov.et/">https://www.facebook.com/aaahb.gov.et/</a>	6406	<a href="mailto:aapheoc@gmail.com">aapheoc@gmail.com</a>



**COVID-19 updates and sources of evidence:**

Source	Link
WHO Coronavirus (COVID-19) dashboard	<a href="https://covid19.who.int/">https://covid19.who.int/</a>
Africa CDC Dashboard, COVID-19 Surveillance Dashboard	<a href="https://au.int/en/covid19">https://au.int/en/covid19</a>
WHO COVID-19 daily situation reports	<a href="https://www.who.int/emergencies/diseases/novel-coronavirus-2019/situation-reports">https://www.who.int/emergencies/diseases/novel-coronavirus-2019/situation-reports</a>
WHO Academy mobile learning app for health workers, COVID-19 information	Android- <a href="https://play.google.com/store/apps/details?id=org.who.WHOA">https://play.google.com/store/apps/details?id=org.who.WHOA</a> Apple- <a href="https://apps.apple.com/us/app/who-academy/id1506019873">https://apps.apple.com/us/app/who-academy/id1506019873</a>



The above presented Quick Reader (QR) code takes you to a portal that you can access updates and all COVID-19 related information available (<https://covid19.ephi.gov.et/covid-19/>)

**DISCLAIMER**

This weekly bulletin is produced based on figures pulled from official releases of the World Health Organization and activities and reports of all the sections under the Incident management System.

This Weekly Bulletin series of publications is published by the Ethiopian public health Institute (EPHI), public health emergency operation center (PHEOC). The aim of this bulletin is to inform decision makers within the institute and FMOH, UN agencies and NGOs about COVID-19 preparedness and response activities.

All interested health and other professionals can get this bulletin at the Institute website; [www.ephi.gov.et](http://www.ephi.gov.et)

**PREPARED BY**

Assegid Tesfaye (Bsc, MPH in Field Epidemiology) – Planning Section, Technical Assistant  
Negusse Yohannes (PhD in Statistics) – Planning Section, Situation Unit Member

**REVIEWED BY**

Zerihun Kassa (MD, MPH) - Planning Section and Administration Focal  
Shambel Habebe (MPH) – Deputy Incident Manager, Case Management Section Focal  
Zewdu Assefa (MPH) – PHE Early Warning and Information System Management P/D/A/Director  
Aschalew Abayneh (RN, BSc, MPH) - DDG-EPHI, Incident Manager

**National COVID-19 Response Incident Management system, Emergency Operation Center  
FOR MORE INFORMATION and NOTIFICATION**

**Web:** [www.ephi.gov.et](http://www.ephi.gov.et)

**Follow us on Twitter:** @EPHIEthiopia

**Facebook:** <https://www.facebook.com/ephimage/>

**Telegram:** <https://t.me/EthPHI>

**Call:** 8335 (TOLL FREE LINE) or 011 276 5340

**Email:** [ephieoc@gmail.com](mailto:ephieoc@gmail.com) or [phemdatacenter@gmail.com](mailto:phemdatacenter@gmail.com)